



**Complete solution for gas station**



**Innovation and service**

**Address:**  
140 Xincheng Avenue, Wenzhou, Zhejiang, China  
T: +86 577 89893677 F: +86 577 89893656  
Email: even@ecotecpetroleum.com  
www.ecotecpetroleum.com  
www.ecotecenergy.net



**ECOTEC**

**Customer and Dedication**

温州益科能源设备有限公司  
Wenzhou Ecotec Energy Equipment Co.,Ltd



## About Ecotec Energy

**Wenzhou Ecotec Energy Equipment Co.,Ltd**, as a professional manufacturer located in Wenzhou China, mainly produce Fuel station equipment as well as the smart station management system. We have approximately 100 employees and we operate over 80 countries and region, serving more than 20000 fuel stations.

**Ecotec's mission** is to bring the smart fueling system and customized product to all the stations over and end-users in order to make the fueling easy and smart, to link and manage all the devices in gas station online and in hand via IOT technology.

**Customer first and dedication** drive Ecotec to offer more personalized and intelligent experience , to develop the products and meet the market demands, to meet the target of offering customer package solution from design, manufacturing, delivery and after-sales service.

**Products:** Ecotec are on the position to offer customer the best customized products with a best price . Including:

1. Fuel station: Fuel dispenser, Pump, Meter, fuel accessories, AdBlue and container stations
2. LPG station: LPG dispenser, LPG pump, LPG meter, LPG skid and other LPG station equipment
3. CNG station: CNG dispenser, CNG compressor, CNG cylinder and skid type CNG station
4. LNG Station: LNG dispenser, LNG pump, LNG pumping skid, LNG vaporizer etc
5. Station Automation system: Station Retail system, Cell phone APP system, Tank Gauging system
6. EV charger: DC Fast Charger, AC charger with option for CCS, GBT and Chademo



ATEX

OIML

MID

ISO

BV



Fuel Dispenser - Fuel Dispenser - Fuel Dispenser - Fuel Dispenser - Fuel Dispenser - Fuel Dispenser - Fuel Dispenser - Fuel Dispenser - Fuel Dispenser

# Fuel Dispenser

01



Mini Station - Mini Station - Mini Station - Mini Station - Mini Station - Mini Station - Mini Station - Mini Station - Mini Station - Mini Station

# Fuel Station

19



ADBLUE - ADBLUE - ADBLUE - ADBLUE - ADBLUE - ADBLUE - ADBLUE - ADBLUE - ADBLUE - ADBLUE - ADBLUE - ADBLUE - ADBLUE - ADBLUE - ADBLUE

# ADBLUE

23



ADBLUE - ADBLUE - ADBLUE - ADBLUE - ADBLUE - ADBLUE - ADBLUE - ADBLUE - ADBLUE - ADBLUE - ADBLUE - ADBLUE - ADBLUE - ADBLUE - ADBLUE

# Fuelplus

25



ATG - ATG - ATG - ATG - ATG - ATG - ATG - ATG - ATG - ATG - ATG - ATG - ATG - ATG - ATG

# ATG

27



Fuel Parts - Fuel Parts - Fuel Parts - Fuel Parts - Fuel Parts - Fuel Parts - Fuel Parts - Fuel Parts - Fuel Parts - Fuel Parts - Fuel Parts - Fuel Parts - Fuel Parts - Fuel Parts - Fuel Parts

# Fuel Parts

29



UPP - UPP - UPP - UPP - UPP - UPP - UPP - UPP - UPP - UPP - UPP - UPP - UPP - UPP - UPP

# UPP

41



Manhole And Sump - Manhole And Sump - Manhole And Sump - Manhole And Sump - Manhole And Sump - Manhole And Sump - Manhole And Sump - Manhole And Sump - Manhole And Sump

# Manhole And Sump

43



Pump And Meter - Pump And Meter - Pump And Meter - Pump And Meter - Pump And Meter - Pump And Meter - Pump And Meter - Pump And Meter - Pump And Meter - Pump And Meter

# Pump And Meter

44



LPG - LPG - LPG - LPG - LPG - LPG - LPG - LPG - LPG - LPG - LPG - LPG - LPG - LPG - LPG

# LPG

45



CNG dispenser - CNG dispenser - CNG dispenser - CNG dispenser - CNG dispenser - CNG dispenser - CNG dispenser - CNG dispenser - CNG dispenser - CNG dispenser

# CNG dispenser

53

Precise, convenient and safe  
"User first" is the top priority in ecotec manufacturing

Ecotec fuel dispenser is with highest accuracy, quality, durability and reliability that always provide utmost satisfaction for all

# G-244

Suction Type Fuel Dispenser



## Features

- Meets OIML and Atex standards and achieving optimum balance of excellent performance economically
- Model available from 1 nozzle to 8 nozzle, max 2 nozzle per side can work at the same time, available for both submersible and suction type
- Model available Tatsuno / Tokheim / Bennett / LPG / Adble / CNG Dispenser, as well as for DC EV charger
- Compact body fits into narrow spaces
- Various Flow rate option:  
Standard (Max): 45LPM / 12GPM  
Enhanced (Max): 75LPM / 20GPM  
Super High (Max): 110LPM / 30GPM  
Ultra High (Max): 200LPM / 55GPM



new design



High Accuracy



Strong hydraulics



graphics displays



Strong vapour Separation

## WA Series Controller



## Function List

### Easy Operation

- Quick Preset
- Auto-calibration
- Auto Rounding
- Quick recall for record
- Flow rate control
- Error indication

### Control and Limitation

- Daily Lock
- Month Lock
- Multi-Level Password control
- Various fueling Limitation
- Electronic calibration control

### Hardware Detection

- E01: Pulsar Detection
- E07: Totalizer Detection
- E24: Leakage Detection
- E02: Motor Detection
- E27: Valve and flow Detection
- E26: Communication Detection

### Smart Function

- Decimal Position change
- Motor standby time setting
- Stop Bit: Hundred/ Thousand
- Compensation for Small filling
- 50 fueling record

## Technical Parameter

Accuracy:	± 0.15%
Ambient Temperature:	- 45°C to+60°C
Ambient of Liquid:	- 25°C to+55°C
Power Supply:	110V / 220V / 380 V
Relative humidity:	5 % to 95%

## G244 Suction Main Parts

Motor:	220V,0.75KW x 2 Units
Pump:	Gear Pump FP1 x 2 Units
Flow Meter:	FM01HA x 2 Units
Nozzle:	3/4 inch x 2 Units
Controller:	WA 224 x 1 Units

## Standard configuration

- Calculator** Eco Pump Electronic Counter WA series  
Calculators with electronic volume /amount totalizers for every dispensing nozzle
- valves** Electromagnetic proportional valve+220 V
- Displays** LCD with LED back light with 8 - 8 - 6 digits for sale-liter-price
- Motors** Ex three-phase motor 380V or single-phase motor 220V, 1.5KW
- Fuel types** Petrol, Diesel, BioDiesel, Ethanol(E85), Kerosene and Gasohol
- Nozzle Switch** With auto Nozzle switch
- Hoses** Dn20, option for Dn25 or DN40
- Housing** Galvanized or powder-painted carbon steel
- Meters** Pistons volume meter, one time calibration for 20 Million Liter
- Suction pumps** Monoblock with gear pump, air separator and filter / Option
- Nozzles** Dn20 Automatic nozzle, Option for 1 and 1.5 inch
- Pulsers** Optoelectronic pulse transmitter with electronic volume correction
- Safe Control** Sealing on Keyboard, Display board main board, meter pulser Printer
- E-Stop** Mainsafety switch(E-STOP)
- Oil Inlet** Flexible pipe connection with flange 1.5 inch, 15cm
- Break Valve** Breakaway couplings 3/4 inch



## OPTIONS

- Automatic temperature volume correction(ATC)
- Breakaway couplings
- Customizable colours
- Customizable design modifications
- Electro-mechanical totalizers
- Flexible pipe connection
- Foundation frame
- Housing-stainless steel
- Infra-red remote controller
- LED site number
- Mainsafety switch(E-STOP)
- Payment terminal-integrated solution for wide range of terminals
- Calculators with electronic volume /amount totalizers for every dispensing nozzle
- Proportional graphics display with customer text messages
- Pulse interface
- Remote version-ready for connection with submersible pump installed inside the tank
- Sight glasses
- Fuelplus management system
- IC CARD SYSTEM
- Sound module
- Cash Receptor
- Ticket Printer
- Volume and amount preset function via push buttons
- Wide range of data line communication protocol converters
- Vapour recovery system

Fuelplus APP

## Fuelplus Handle POS



- Inbuilt with ticket printer
- Support NFC card
- Support RFID card
- Support M1 Card
- Support Barcode reader
- Support Mobile Pocket
- Run Fuelplus to control FD

## Fuelplus APP



- Both Android and IOS
- Monitor / Control FD
- Monitor ATG
- Set Parameter
- Check Record
- Report Error

# ECOTEC G-244

Dispensing Pump & Dispenser  
www.ecotecenergy.net

Precise, convenient and safe  
"User first" is the top priority in ecotec manufacturing

Ecotec fuel dispenser is with highest accuracy, quality, durability and reliability that always provide utmost satisfaction for all

# FC-364

Submersible Type Fuel Dispenser



## Features

- Meets OIML and Atex standards and achieving optimum balance of excellent performance economically
- Model available from 1 nozzle to 8 nozzle, max 2 nozzle per side can work at the same time, available for both submersible and suction type
- Model available Tatsuno / Tokheim / Bennett / LPG / Adble / CNG Dispenser, as well as for DC EV charger
- Compact body fits into narrow spaces
- Various Flow rate option:  
Standard (Max): 45LPM / 12GPM  
Enhanced (Max): 75LPM / 20GPM  
Super High (Max): 110LPM / 30GPM  
Ultra High (Max): 200LPM / 55GPM



new design



High Accuracy



Strong hydraulics



graphics displays



Strong vapour Separation

## WB Multi Nozzle Controller



## Function List

### Easy Operation

- Quick Preset
- Auto-calibration
- Auto Rounding
- Quick recall for record
- Flow rate control
- Error indication

### Control and Limitation

- Daily Lock
- Month Lock
- Multi-Level Password control
- Various fueling Limitation
- Electronic calibration control

### Hardware Detection

- E01: Pulsar Detection
- E07: Totalizer Detection
- E24: Leakage Detection
- E02: Motor Detection
- E27: Valve and flow Detection
- E26: Communication Detection

### Smart Function

- Decimal Position change
- Motor standby time setting
- Stop Bit: Hundred/ Thousand
- Compensation for Small filling
- 50 fueling record

## Technical Parameter

Accuracy:	± 0.15%
Ambient Temperature:	- 45°C to+60°C
Ambient of Liquid:	- 25°C to+55°C
Power Supply:	110V / 220V / 380 V
Relative humidity:	5 % to 95%

## FC 364 Sub Main Parts

Cut-off Valve:	1.5 Inch x 3 Units
Filter:	FT-01 x 3 Units
Flow Meter:	FM01HA x 6 Units
Nozzle:	3/4 inch x 6 Units
Controller:	Wb364 x 1 Unit

## Standard configuration

- Calculator** Eco Pump Electronic Counter WB series for multi-Nozzle fuel dispenser
- valves** Electromagnetic proportional valve+220 V
- Displays** LCD with LED back light with 8 - 8 - 6 digits for sale-liter-price
- Filter** Stainless steel,reusable,easy to clean
- Fuel types** Petrol,Diesel,BioDiesel,Ethanol(E85),Kerosene and Gasohol
- Nozzle Switch** With auto Nozzle switch
- Hoses** Fuel hose, 3/4 inch, 4 Meter with coupling , 1 inch for option
- Housing** Galvanized or powder-painted carbon steel
- Meters** Pistons volume meter
- Motors** Ex three-phase motor 380V or single-phase motor 220V, 1.5KW
- Nozzles** Dn40 Automatic nozzle
- Pulsers** Optoelectronic pulse transmitter with electronic volume correction
- Safe Control** Sealing on Keyboard, Display board main board, meter pulser Printer
- E-Stop** Mainsafety switch(E-STOP)
- Oil Inlet** Grid Pipe with cut-off Valve 1.5 Inch
- Break Valve** Breakaway couplings 3/4 inch



## OPTIONS

- Automatic temperature volume correction(ATC)
- Breakaway couplings
- Customizable colours
- Customizable design modifications
- Electro-mechanicaltotalizers
- Flexible pipe connection
- Foundation frame
- Housing-stainless steel
- Infra-red remote controller
- LED site number
- Mainsafety switch(E-STOP)
- Payment terminal-integrated solution for wide range of terminals
- Calculators with electronic volume /amount totalizers for every dispensing nozzle
- Proportional graphics display with customer text messages
- Pulse interface
- Remote version-ready forconnection withsubmersible pump installed inside the tank
- Sight glasses
- Fuelplus management system**
- IC CARD SYSTEM**
- Sound module
- Cash Receptor
- Ticket Printer
- Volume and amount preset function via push buttons
- Wide range of data line communication protocolconverters
- Vapour recovery system

## Fuelplus APP

## Fuelplus Handle POS

- Inbuilt with ticket printer
- Support NFC card
- Support RFID card
- Support M1 Card
- Support Barcode reader
- Support Mobile Pocket
- Run Fuelplus to control FD



## Fuelplus APP

- Both Android and IOS
- Monitor / Control FD
- Monitor ATG
- Set Parameter
- Check Record
- Report Error



# ECOTEC FC-364

# H-242

Dispensing Pump & Dispenser

Fuel Dispenser H series with flow rate from 5LPM to 120LPM serve for dispensing of liquid oil products into car or trucks.

Model H are progressive single or double side fuel dispenser with 1 to 4 hose(each side) for dispensing 4 Nozzles at the same time. The fuel dispenser are equipped by the highest-quality gear Pump and 4-Piston Flow meter and a reliable electronic controller WA and WB Series

A simple and attractive design with durable material in addition to composite plastic nozzle boots with automatic switch and countless design configuration lasts longer and offers certain benefit to its users

- Model available for Tatsuno / Tokheim / Bennett LPG / Adble / CNGDispenser, and DC EV charger
- Available with IC / ID CARD SYSTEM
- Optional function: Smart screen / LED rolling display
- Ticket printer / Voice Teller / Barcode Scanner
- Fuelplus Management system working with GRPS / 4G / WIFI / RJ 45 Wire and Lora to achieve remote control, error report, record enquiry on cell phone, computer, Smart Scree and handle POS

Model	Product (Pump)	Nozzle (Meter)	Display
H224	2	2	4
H244	2	4	4
H364	3	6	4
H484	4	8	4



**H224**  
1Product-2Nozzle-4Display  
Dimension:920\*600\*2250mm

**H244**  
2Product-4Nozzle-4Display  
Dimension:1050\*650\*2250mm

**H366**  
3Product-6Nozzle-6Display  
Dimension:1300\*650\*2250mm

**H484**  
4Product-8Nozzle-4Display  
Dimension:1300\*650\*2250mm



**L112-A**  
1Product-1Nozzle-2Display  
Dimension:1110\*500\*2100mm

**L224-A**  
2Product-2Nozzle-4Display  
Dimension:1110\*500\*2100mm

**L112-B**  
1Product-1Nozzle-2Display  
Dimension:1110\*500\*2100mm

**L224-B**  
2Product-2Nozzle-4Display  
Dimension:1110\*500\*2100mm

# L-224

Dispensing Pump & Dispenser

Fuel Dispenser L series with flow rate from 5LPM to 120LPM serve for dispensing of liquid oil products into car or trucks.

Model L are designed for single or double nozzle fuel dispenser for dispensing 2 Nozzles 2 Product at the same time. The fuel dispenser are equipped by the highest-quality gear Pump and 4-Piston Flow meter and a reliable electronic controller WA Series

- IC/ID Card / NFC reader
- Printer / LED Rolling / Barcode scanner
- Fuelplus management system with wireless and wire solution
- Tatsuno / Bennett Tokheim submersible



Internal View

Model	Product (Pump)	Nozzle (Meter)	Display
H224	2	2	4
H244	2	4	4
H364	3	6	4
H484	4	8	4



# FA-242

Dispensing Pump & Dispenser



Fuel Dispenser **FA series** with flow rate from 5LPM to 120LPM serve for dispensing of liquid oil products into car or trucks.

**Model FA** are progressive single or double side fuel dispenser with 1 to 4 hose(each side) for dispensing 2 Nozzles at the same time. The fuel dispenser are equipped by the highest-quality gear Pump and 4-Piston Flow meter and a reliable electronic controller WF and WB Series

Design with a **hose tractor inbuilt** with fuel dispenser to allow the hose return back to position automatically when the fueling is completed, also available to install a smart touch screen instead of the keyboard to achieve self-servie

- Model available for Tatsuno / Tokheim / Bennett LPG / Adble / CNGDispenser, and DC EV charger
- Available with IC / ID CARD SYSTEM
- Optional function: Smart screen / LED rolling display
- Ticket printer / Voice Teller / Barcode Scanner
- Fuelplus Management system working with GRPS / 4G / WIFI / RJ 45 Wire and Lora to achieve remote control, error report, record enquiry on cell phone, computer, Smart Scree and handle POS

Model	Product (Pump)	Nozzle (Meter)	Display
FA 222	2	2	2
FA 242	2	4	2
FA 362	3	6	2
FA 482	4	8	2



**FA222**

2Product-2Nozzle-2Display  
Dimension:1000\*590\*1800mm

**FA242**

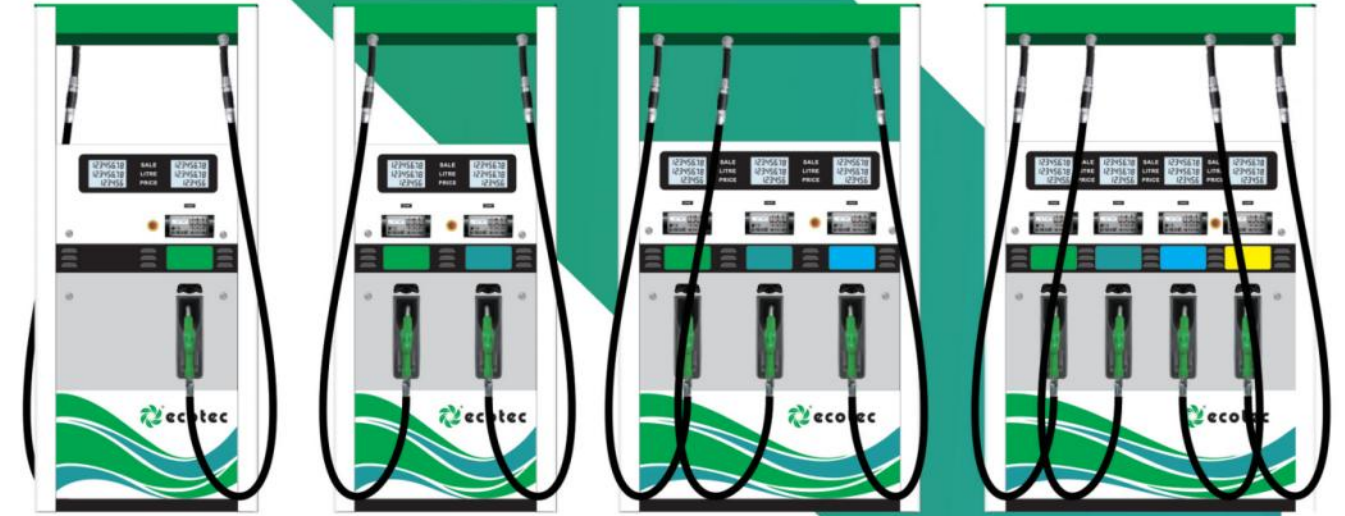
2Product-4Nozzle-2Display  
Dimension:1150\*590\*1800mm

**FA362**

3Product-6Nozzle-2Display  
Dimension:1550\*590\*1800mm

**FA482**

1Product-1Nozzle-2Display  
Dimension:2050\*590\*1800mm



**EG-224**

2Product-2Nozzle-4Display  
Dimension:940\*550\*2150mm

**EG-244**

2 Product-4Nozzle-4Display  
Dimension:1100\*590\*2150mm

**EG-366**

3Product-6Nozzle-6Display  
Dimension:1330\*590\*2150mm

**EG-488**

4Product-8Nozzle-8Display  
Dimension:1480\*590\*2150mm

# EG-224

Dispensing Pump & Dispenser

Fuel Dispenser **EG series** with flow rate from 5LPM to 75LPM serve for dispensing of liquid oil products into car or trucks.

**Model EG** are progressive single or double side fuel dispenser with 1 to 4 hose(each side) for dispensing 8 Nozzles at the same time. The fuel dispenser are equipped by the highest-quality gear Pump and 4-Piston Flow meter and a reliable electronic controller WA ,WB and WF Series

Design with big window to install keyboard / display from front of both side, to achieve all nozzle can working the same time, it is very popular design for busy station, where have many motorcycle

- Model available for Tatsuno / Tokheim / Bennett LPG / Adble / CNGDispenser
- Fuelplus management system with wireless and wire solution
- Both suction and submersible
- IC/ID Card / NFC reader
- Printer / LED Rolling / Barcode scanner

Model	Product (Pump)	Nozzle (Meter)	Display
EG-224	2	2	4
EG-244	2	4	4
EG-366	3	6	6
EG-488	4	8	8



# CK-244

Dispensing Pump & Dispenser

Fuel Dispenser **CK series** with flow rate from 5LPM to 75LPM serve for dispensing of liquid oil products into car or trucks.

**Model CK** are progressive single or double side fuel dispenser with 1 to 2 hose(each side) for dispensing 4 Nozzles at the same time. The fuel dispenser are equipped by the highest-quality gear Pump and 4-Piston Flow meter and a reliable electronic controller WA , WB and WF Series

A simple and attractive design with durable material in addition to composite plastic nozzle boots with automatic switch and countless design configuration lasts longer and offers certain benefit to its users

- Model available for Tatsuno / Tokheim / Bennett LPG / Adble / CNGDispenser, and DC EV charger
- Available with IC / ID CARD SYSTEM
- Optional function: Media player / LED rolling display
- Ticket printer / Voice Teller / Barcode Scanner
- Fuelplus Management system working with GRPS / 4G / WIFI / RJ 45 Wire and Lora to achieve remote control, error report, record enquiry on cell phone, computer, Smart Scree and handle POS

Model	Product (Pump)	Nozzle (Meter)	Display
CK-224A	2	2	4
CK-224B	2	2	4
CK-224C	2	2	4
CK-244	4	4	4



**CK-224A**

2Product-2Nozzle-2Display  
Dimension:950\*500\*1710mm

**CK-224B**

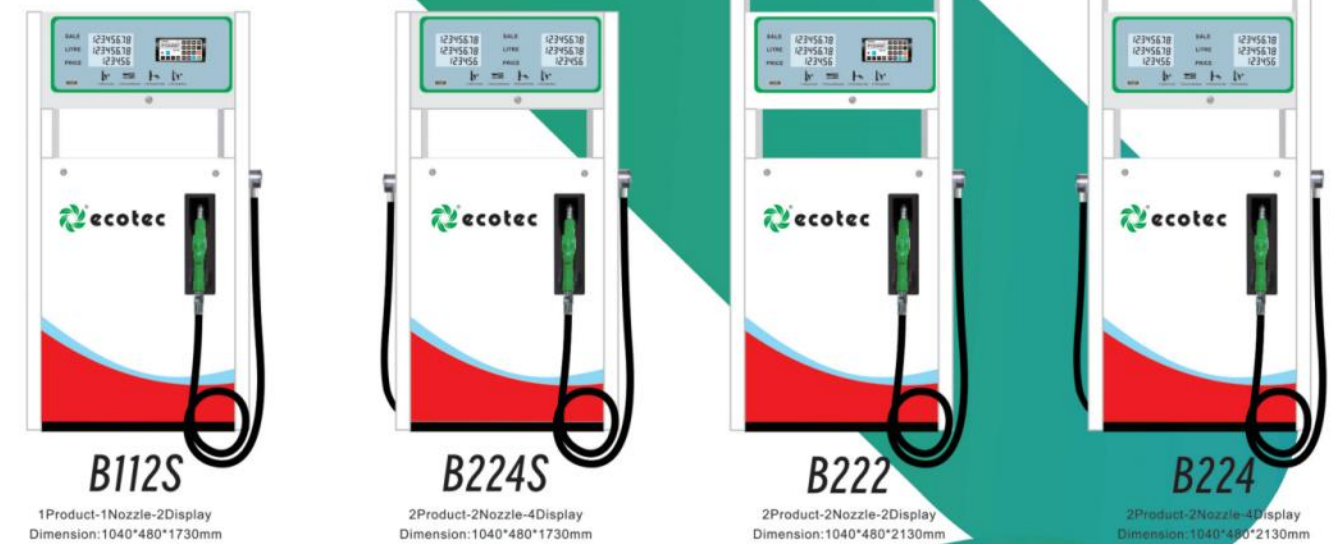
2Product-2Nozzle-4Display  
Dimension:950\*500\*2200mm

**CK-224C**

2Product-2Nozzle-4Display  
Dimension:1000\*500\*2250mm

**CK-244**

2Product-4Nozzle-4Display  
Dimension:1000\*500\*2250mm



**B112S**

1Product-1Nozzle-2Display  
Dimension:1040\*480\*1730mm

**B224S**

2Product-2Nozzle-4Display  
Dimension:1040\*480\*1730mm

**B222**

2Product-2Nozzle-2Display  
Dimension:1040\*480\*2130mm

**B224**

2Product-2Nozzle-4Display  
Dimension:1040\*480\*2130mm

# B-224

Dispensing Pump & Dispenser

Fuel Dispenser **B series** with flow rate from 5LPM to 120LPM serve for dispensing of liquid oil products into car or trucks.

**Model B** are designed for economic solution for single or double fuel dispenser for dispensing 2 Nozzles at the same time. The fuel dispenser are equipped by the highest-quality gear Pump and 4-Piston Flow meter and a reliable electronic controller WA Series

Model can be produced as short and tall design, Nozzle and keyboard can be placed both on side or front, to achieve fueling from different position, also can work with **solar panel with hand drive pump**

- Model available for Tatsuno / Tokheim / Bennett LPG / Adble / CNGDispenser
- Fuelplus management system with wireless and wire solution
- Both suction and submersible
- IC/ID Card / NFC reader
- Printer / LED Rolling / Barcode scanner

Model	Product (Pump)	Nozzle (Meter)	Display
B-112S	1	1	2
B-224S	2	2	4
B-222T	2	2	2
B-224T	2	2	4



Ecotec fuel dispenser can be designed for varies nozzle number, pump available for Tokheim, Tatsuno, Bennett, flow meter available for Tatsuno, bennett, Gilbarco and Wayne Flow meter, Options for both suction and submersible, Nozzle front and Nozzle side, Media player and automation

Ecotec are able to design and manufacture any kind of shape with any function or standard, customer's design, color, logo and all the special request are welcomed, also we can keep all the products with same performance



ET-P11



ET-XP112



ET-A112



ET-AG112



ET-YG112



ET-D224S



ET-B224A



ET-B122B



ET-B122C



ET-C224



ET-C224A



ET-D224A



Ecotec fuel dispenser can be designed for varies nozzle number, pump available for Tokheim, Tatsuno, Bennett, flow meter available for Tatsuno, bennett, Gilbarco and Wayne Flow meter, Options for both suction and submersible, Nozzle front and Nozzle side, Media player and automation

Ecotec are able to design and manufacture any kind of shape with any function or standard, customer's design, color, logo and all the special request are welcomed, also we can keep all the products with same performance



ET-G224



ET-M224



ET-BG224



ET-E112



ET-YG224



ET-W244



ET-FB366



ET-F366



ET-FD244



ET-FE244



ET-FF482



ET-T366

Ecotec fuel dispenser can be designed for varies nozzle number, pump available for Tokheim, Tatsuno, Bennett, flow meter available for Tatsuno, bennett, Gilbarco and Wayne Flow meter, Options for both suction and submersible, Nozzle front and Nozzle side, Media player and automation

**Heavy Duty Series**


**ET-A244**  
With 2 Hose reel  
For Marine fueling



**ET-A112**  
Heavy duty  
200-500LPM

**Customized Design**


**ET-R244**



**ET-Y224**



**ET-I224**

Ecotec are able to make any type of mobile fuel dispenser, with different voltage such as DC 12V, DC 24V and AC 220V, also can provide different flow rate such as 45L, 55L, 75L, 120L and 200L, all the motor and parts is with EX-proof standard, also hose reel and drum as one option.

**Mobile dispenser Series**


**ET-V112**  
Inbuilt with 120L Drum



**ET-Z111B**  
Tatsuno pump  
tatsuno meter



**ET-Z111-HR**  
Transfer Pump  
with Hose Reel



**ET-Z111**

**Inside View**


**ET-Z111TS**



**ET-Z111H**  
Heavy duty



# Mini Fuel Station

# Q-Seires

for a mobile fueling solution

Mini Fuel station is a convenient and mobile fueling station, inbuilt with 1-3 compartments tank working for different products, it contain fuel pump, flow meter, nozzle hose, valve, controller, hand pump, level gauge, as well as an solar panel for a an solution where not have the stable power supply.

Ecotec Q series can installed the Fuelplus management system to make the mini station working online, owner can lock the machine anytime anywhere, also can achieve the mini station a self-service by issuing the IC or ID card to the driver.

Q series can be designed according customer's need, capacity is available from 500L to 6000 L, also can choose different power supply solution, such as 12V, 24v and AC 220V to meet the using



## Product Show



## Model List

Model	Nozzle	Compartment	Max.Capacity	Container measurement L * W * H(mm)		
ET-Q-1KL-1	1	1	1000 L	1400	1100	1250
ET-Q-2KL-2	2	2	1000 L*2	2210	1100	1250
ET-T-3KL-3	3	3	1000 L*3	2210	1600	1250
ET-T-4KL-2	2	2	2000 L*2	2500	1500	1600
ET-T-5KL-2	2	2	2500 L*2	3060	1500	1600
ET-T-6KL-3	3	3	2000 L*3	3060	1500	1700

## Main Component

### Gear motor Pump



- Power: 220V /12V/24V
- EX proof
- Flow Rate: 55L/min

### Flow meter



- Discharge rate: 0.5L
- Flow rate: 5-90L/min
- Accuracy: ±0.2%

### Solenoid Valve



- Type: Flange or Thread 3/4
- Voltage: 220v
- Flow Rate: 55L/min

### Auto Nozzle



- Inlet: NPT 3/4", Outlet: 13/16"
- Flow Rate: 55L/min
- Color: Red/Green/Black

### Controller



- Smart Controller
- Easy Operation
- Pos Ready Rs485 Tatsuno

### Fuelplus Pos



- IOS / android APP control
- Online report / Parameter set
- ATG Monitor

### Manual Pump



- Keep business while power out
- Recommend with solar system

### Level Gauge



- View storage
- Easy Installation and operation
- Support alarm

## Tech Specification

Item	Technical index	Item	Technical index
Power	AC220V/DC12/DC24	Capacity	1000-6000L
Measure	Accuracy	Medium	Diesel or gasoline
	Repeatability	Compartment	1-3
Flow rate	70Lmin:5L	Working environment	-25°C- +55°C
Accumulative counting range	0-9999999999.99 L or s	Relative humidity	30%-90%
Single counting range	0-9999.00 L or s	Incoming vacuum	54kPa
		Current	36A
Unit price range	0-99.995/L	Nozzle	3/4" or 1" nozzle
		Hose	3/4" or 1" hose

# Container station

# T-20KL

for a mobile fueling solution

Mobile Container station is a complete gas station built in an ISO container for selling the fuel to vehicles and machines, it is widely used in remote area, bus stations, seaports, airports, large construction sites, highways, parking place, private internal station, war-torn area, mining area or even downtown for a temporary use, it is a really good solution comparing to traditional station, because it is convenient, low-cost, non-construction needed, self-supported, customizable, movable and flexible.

Depends on different usage, ecotec can offer different solutions accordingly, normally include 20 Feet ISO container station, 40 Feet ISO container station or other NON-Standard container station



### Model List

Model	Size	Compartment	Max.Capacity	Container measurement L * W * H(mm)		
ET-T-10KL-1	10ft	1	12000 L	3000	2300	2400
ET-T-20KL-1	20ft	1	24000 L	6000	2300	2400
ET-T-20KL-2	20ft	2	12000 L*2	6000	2300	2400
ET-T-40KL-1	40ft	1	48000 L	12000	2300	2400
ET-T-40KL-2	40ft	2	24000 L*2	12000	2300	2400
ET-T-40KL-3	40ft	3	16000 L*3	12000	2300	2400

Technical Specification of ET-T-20KL		
Description	Specifications and details	Option
Fuel Type	Diesel / Gasoline	
Material	Carbon steel with high corrosion resistance. Must have: <ul style="list-style-type: none"> <li>• 2 coats of iron oxide anti-rust paint</li> <li>• 1 coats of oil-based paint</li> <li>• All welds should have full penetration and complete fusion</li> </ul>	
Size	6000 x 2300 x 2400 mm	
Thickness	6mm (double layer as option)	double layer
Pressure	0.1 MPA.	
Wall	single wall with 1 compartment	2 or 3 compartment
Discharge pump	1 unit of fuel transfer explosion-proof pump, approximately 200Liter/min with valves, Hose, Camlocks, and piping. Capable unloading and supply include	500LPM
	Drain valve	
	Check valves	
	Gate valves	
	Pressure valve	
Fuel Dispenser.	Water trap	
	Basket Strainer/filter	
	The container tank station includes 1 by 1 nozzle fuel dispenser ET-D111 (70L/min) for each kind be electromechanical dispenser. Calibrated in accordance with the manufacturer's specification	120L option
	Have support base/plates	
	Illuminated liquid crystal volume display indicating wires	
Offloading/transfer pump	Memory backup for the computer display to maintain a display for 15 minutes during a power failure.	
	Totally enclosed flameproof motor	
	Flow meter	option
	Fuel filter	
	Connection pipes	
Electrical	Flexible pipe	
	Adaptor	
	Control valves	
	Electricity control box	
	static groundings	
Fire extinguisher	Electronic liquid level meter	
	Anti-explosion device	
System and POS	Lights & alarms	
	Class B fire extinguisher	
	Pressurized powder or foam type	
	Ball type auto fire extinguisher mounted on top of dispensing area	
	Fuelplis Management system is available	
Accessories	Connecting by wifi / Rd45 / 2G /3G/4G available	System as option
	1.IC Card reader	
	2.ID Card reader	
	3.Self-service POS / APP money pocket	
	4.Tank capacity / ID / serial No. / Date of MFQ/ Size on Tank body	
	Oil inlet with pipework, valves and connections	
	Pump Bay with lockable door	
	Mechanical overfill protection valve and electronic overfill alarm	
	Vent for tank	
	Dipstick and its port	ATG as option
	Access ladder and platform	
	Anti-syphon valve	
Fuel filter on both oil inlet and outlet		
Forklift holes		
Manhole and cover		
Flow meter (for discharging as option)	discharging as option	
Diesel tank level quantity reading device (manual/electronic)(option)		
Electricity distribution box;		
Explosion-proof Lighting and		

Container station

# AdBlue Skid

## AdBlue Fueling solution for diesel

**AdBlue Skid** is a modern fueling and measuring device designed to deliver a water solution of urea - AdBlue for cars with diesel engine, equipped with selective catalytic reduction system (SCR). AdBlue skid is equipped Tank, Pump, meter, Temp Control unit, hose and nozzle, electromagnetic valve and new electronic unit to control all fueling function to assure high accuracy of measured liquid volume; The device is safe-operating and applied noble materials assures high resistance, reliability and low maintenance.

Complete skid with pump, dispenser, tank with design for easy transportation With loading Pump and quick connector Fueling Operation same as AdBlue dispenser, available with IC card and ID card for self-service, also with option to work with ecotec fueling management system Fuelplus to full control and monitoring Tank could be protected against both hot and cold condition, internal tank material can be HDPE or SUS304E

ADBLUE



### Tech. Specification

Accuracy: ±0.30%  
 Repeating Accuracy: ≤0.15%  
 Flow range: (5~50) L/min  
 Unit price range: 0~999999  
 Single range: 1~999999.99  
 Accumulative range: 0~9999999999.99  
 Ambient Temperature: -40°C~+55°C  
 Humidity: ≤95%  
 Atmospheric Pressure: 86kPa~106kPa  
 Power: AC380V±20% (50Hz)

### Optional

- Hose reel
- Preset functions via push buttons
- Unit price display per product
- Product indication lights
- IR remote control compatible
- Mechanical totalisers on meter
- Ground frame
- Heating system
- Breakaway couplings
- Low temperature kit
- IC / ID card for self-service
- Ticket Printer
- Various stainless steel cladding solutions
- Customized livery of complete dispenser
- Fire and tilt detection
- Touch screen with Fuelplus application

### Other Design



### Model List

Model	Nozzle	Capacity (T)	Dimension(mm)	Material of Tank
ET-AD11	1	1	1500*1180*1850	HDPE
ET-AD12	1	2	2190*1180*2100	Stainless Steel
ET-AD13	1	3	2890*1180*2100	Stainless Steel
ET-AD14	1	4	3500*1180*1850	Stainless Steel
ET-AD15	1	5	3970*2270*2500	Stainless Steel
ET-AD22	2	2	2190*1180*2100	Stainless Steel
ET-AD23	2	3	2890*1180*2100	Stainless Steel
ET-AD24	2	4	3500*1180*1850	Stainless Steel
ET-AD25	2	5	3970*2270*2500	Stainless Steel

### Main Component

<h4>Pump</h4> <ul style="list-style-type: none"> <li>• Power: 220V /12V/24V</li> <li>• EX proof</li> <li>• Flow Rate: 55L/min</li> </ul>	<h4>Centrifugal pump</h4> <ul style="list-style-type: none"> <li>• Discharge rate: 0.5L</li> <li>• Flow rate: 5-90L/min</li> <li>• Accuracy: ±0.2%</li> </ul>	<h4>flow meter</h4> <ul style="list-style-type: none"> <li>• Type: Flange or Thread 3/4"</li> <li>• Voltage: 220v</li> <li>• Flow Rate: 55L/min</li> </ul>	<h4>Nozzle</h4> <ul style="list-style-type: none"> <li>• Inlet: NPT 3/4", Outlet: 13/16"</li> <li>• Flow Rate: 55L/min</li> <li>• Color: Red/Green/Black</li> </ul>
<h4>Controller</h4> <ul style="list-style-type: none"> <li>• Smart Controller</li> <li>• Easy Operation</li> <li>• Pos Ready Rs485 Tatsuno</li> </ul>	<h4>Fuelplus Pos</h4> <ul style="list-style-type: none"> <li>• IOS / android APP control</li> <li>• Online report / Parameter set</li> <li>• ATG Monitor</li> </ul>	<h4>SS Solenoid Valve</h4> <ul style="list-style-type: none"> <li>• Keep business while power out</li> <li>• Recommend with solar system</li> </ul>	<h4>Level Gauge</h4> <ul style="list-style-type: none"> <li>• View storage</li> <li>• Easy Installation and operation</li> <li>• Support alarm</li> </ul>

### Adblue Dispenser



**Config:**  
 1 x Adblue Pump with motor(SS Option)  
 1 x Adblue meter ( SS option )  
 1 x Adblue stainless Nozzle, 3/4inch NPT  
 1 x Solenoid valve, Flange  
 1 x Electronic controller WA112,  
 1 x Keyboard  
 1 x Display board

**Parameter:**  
 MAX Flow: 50L/min  
 Working Temp: -5 /50+  
 Working Pressure: 3.5bar  
 Rated voltage 230V



**Fuelplus APP**  
 Both Android and IOS  
 Monitor / Control FD  
 Monitor ATG  
 Set Parameter  
 Check Record  
 Report Error



# Fuelplus FMS

A easy way to manage the gas station

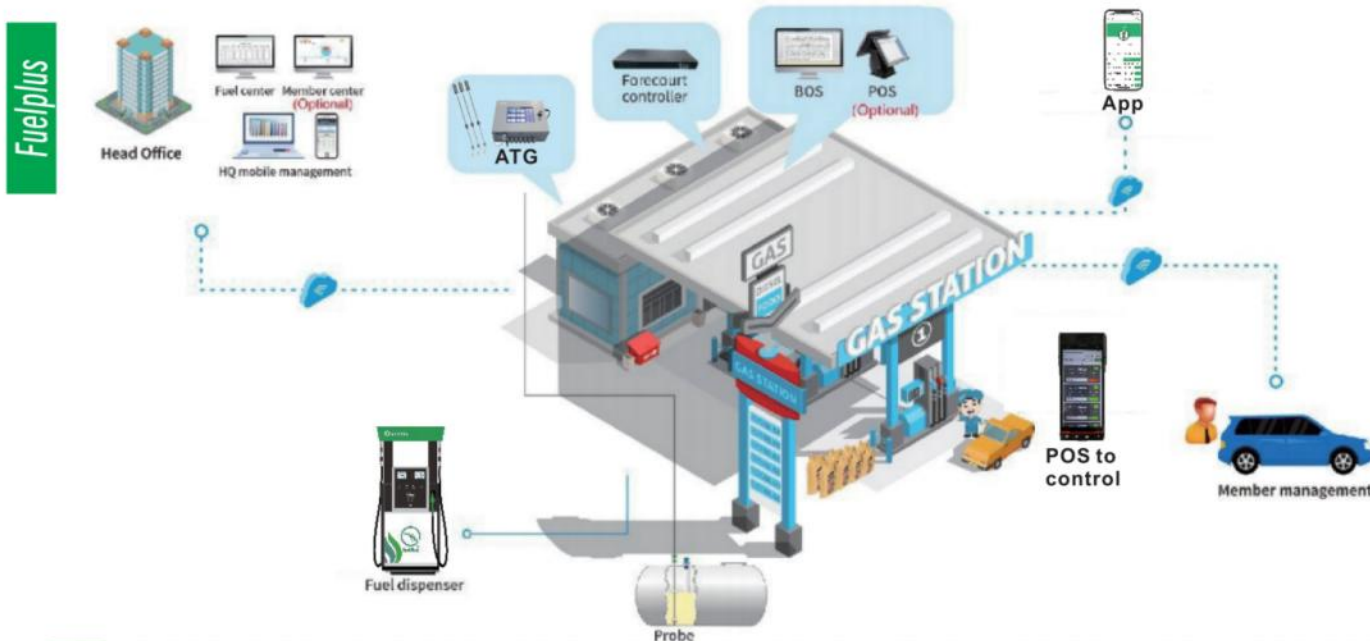
## About Fuelplus

Fuelplus system can is a smart automation management system, offering complete solution for gas station, oil depot, oil tanker trailer, Fuelplus can manage the fuel dispenser, ATG, LED price board and other device by means of Rs485, Rj45, Lora, wifi, 4G / 3G and GRPS with database on cloud or local basis; available on PC, Laptop, Cell phone both iOS and android, as well as other payment terminal( POS)  
 Fuelplus have several control on different user roles, station owner can achieve full control of station on full weather, employee can query all record, report and control fueling in office, driver and achieve self-service



## Business scope

Fuelplus can set up center database to control and monitor all fleet stations, every station can have local management system to control the fuel dispenser, ATG, LED price, every fuel dispenser can install POS terminal, IC card reader, ID card reader to achieve self-service, every ATG can linked to fuelplus timely  
 Fuelplus also can work as single station or single dispenser, also container station solution, you can install the application on can smart control screen or POS to achieve the control, it can working without any PC



## Main Function

Import Oil	Fueling	ATG MGT.	Lose & gain MGT	Cashier
Shift closing	Daily closing	Shift report	Daily report	Period report
Transaction record	Parameter Set	Price adjustment	Goods Sale	Invoice MGT

## Fueling Panel

The fueling panel interface shows two nozzle selection screens. Each screen displays 'Nozzle No.', 'Product', 'Volume', 'Amount', and 'Price'. The first screen shows 'Nozzle No.: 1', 'Product: [blank]', 'Volume: 0', 'Amount: 0', and 'Price: 0.5'. The second screen shows 'Nozzle No.: 3', 'Product: [blank]', 'Volume: 0', 'Amount: 0', and 'Price: 0.5'. Both screens have 'Lock' and 'Set Parameter' buttons, and a 'Stop' or 'Start' button.

## Parameter set

The parameter set interface shows a 'Modify' window with a 'Parameter Set' table. The table has columns for 'Parameter Set', 'Value', and 'Action'. The rows are:

R0001	0.50	Set Price	Download
R0002		Clear Shift Total	Download
R0003	0.25	Big Valve Closing Value	Download
R0004	0.00	Small Valve Closing Value	Download
R0007	0000	Voice Filling type, Voice Product No. 2 digits, Backlight time	Download
		Calibration	

## Fueling Record

The fueling record interface shows a table of fueling transactions. The table has columns: ID, SN, Nozzle, Tank, Oil Product, Unit Price, Amount, and Vol. The data rows are:

ID	SN	Nozzle	Tank	Oil Product	Unit Price	Amount	Vol
2633067	3900000434	1			1	7.75	26
2633066	3900000409	4			0.5	1	2
2633062	3900000382	1			0.5	20	40
2633058	390000015	2			0.5	5	10
2633056	3900000540	3			0.5	6.02	12
2633055	3900000079	1			0.5	10	20
2633054	3900000540	1			0.5	10	20
2633053	3900000883	1			0.5	550	15
2633052	3900000434	1			1	13	41
2633050	3900000409	4			0.5	10	30

## Fueling Report

The fueling report interface shows a summary of fueling data. It includes a 'Station Report' table with columns: Nozzle, Oil Product, Starting Total, Ending Total, Total, and Pro. The data rows are:

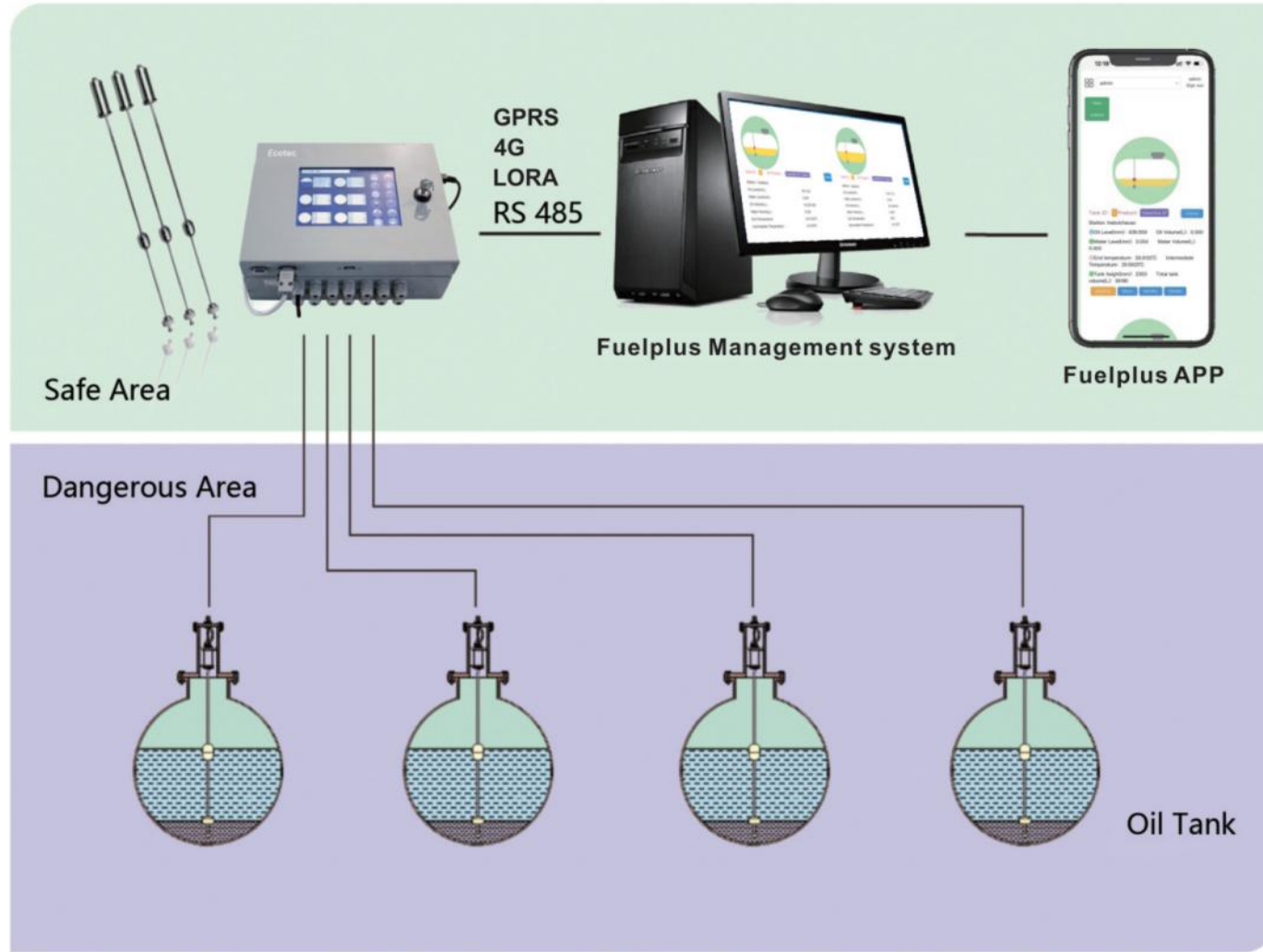
Nozzle	Oil Product	Starting Total	Ending Total	Total	Pro
1	3900000079	157370.12	157370.12	1564.98	-31
2	3900000079	200344.36	200344.36	317.07000	-31
3	3900000101	790704.545	790704.545	883.864	408

# Tank Gauging System

Manage the Tank anyway, anytime

# ATG

## Fuelplus system for ATG



## ATG

Tank level gauge control system consists of liquid level gauge controller, magneto strictive level gauge, management sever and management software. And other components, through the tank level, the average temperature and the other data of the accurate measurement, effective management of gas station invoicing and shift and other business. The system can monitor 1-6 tanks at same time. Fully realize the closed measurement and data quasi. Indeed, safety, at the same time with side leakage alarm, accident alarm, liquid level alarm and other functions. Petrol station can be full bit of monitoring, fully automated petrol station management, intelligent.

Console is the interface of customer operation and display, also is the data management and record center. The major unit of the console is power board, main board, touch screen, safety barrier. Through the reducing voltage from the power board, it will supply a safety voltage and current status for whole system

Ecotec Probe also can work directly to Fuelplus system without install the Console to save the cost, by means of wire and wireless such as Lora, 4G, 3G, GRPS, Wifi so on



YW-6

## Console Feature

- Touch screen
- Real time monitor
- Can check 8 tanks at same time
- Alarm and remove alarm automatically
- Create report automatically
- Attendant management
- Real time clock
- Tank data input

## Probe



## Certificate



SP series magnetostrictive tank level probe can accurately measure the product level, water level and temperature of tank and transmit data to console in real time. It consists of floater kits, measuring robe and 316L protection tube, probe head and communication cable.

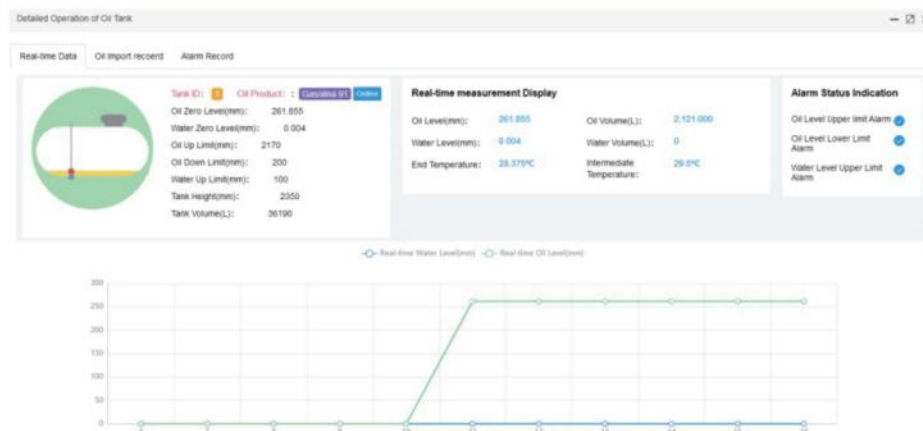
## Probe feature

- Real time data transmission
- Measure fuel liquid level and water level(if have)at the same time
- 5 temperature sensors distributed on probe
- Intrinsically safety, used in class 0
- Rs485 communication port
- Digital signal transition, high anti-interruption ability
- Maximum communication distance 1200m
- High precision as 0.5mm and resolution as 0.01mm
- 316L stainless steel ensures longer lifetime in most petroleum products
- Easy to install
- Maintenance free
- Reliable performance and environment adaptability

## Wireless Solution



ATG



## ATG System

- Support both Cloud and Local server
- Support Wire and wireless connection
- Monitor the Probe real time
- Support Report of Delivery and inventory
- Support alarm report
- Support shift report
- Support search by time or/and by tank
- User-defined alarms
- Report can be saved as PDF or Excel

ATG

# Fuel Pump



ET Vane Pumps for fuel dispenser can be used to transfer gas-liquid mixture with the function of separation the air from gasoline, kerosene, diesel etc. Pump design like Tatsuno, tokheim, bennett all available

The pump is a collection of pumping, separation and transmission with advantage of reasonable and compact design, low noise, long working life, aluminum die casting, beautiful modeling.

ET Gear Pump, made by cast iron is applicable to gasoline, kerosene, diesel and gasohol. inlets of the pump. Air separator, by-pass valve, check valve and inlet filter are built in.

**Gear Pump offer various capacity for choice, flow rate available for 45LPM, 70LPM, 90LPM and 120LPM**

Fuel Parts



ET - FP1

ET - FP2

ET - FP3

ET - FP4

Model Number	ET - FP1	ET - FP2	ET - FP3	ET - FP4
Motorpower	0.75KW/1.1KW	0.75KW	0.75KW	1.1KW
Speed	900 rpm	660 rpm	900 rpm	660rpm
Flow Rate	45L/min-75L/min	55L/min	45L/min-55L/min	120L/min
Vacuum	=0.06Mpa	=0.054Mpa	=0.06Mpa	=0.054Mpa
Outlet pressure	0.18Mpa-0.24Mpa	0.18Mpa-0.35Mpa	0.18Mpa-0.24Mpa	0.18Mpa-0.35Mpa
GW/Dimension	18KG/40*28*38 cm	11KG/46*28*32cm	38KG/40*28*38 cm	16KG/35*28*38 cm

## Other Pumps



ET - FP5  
50L/min

ET - FP6  
80L/min

ET - FP7  
120L/min

ET - FP8  
200L/min

# Flow Meter



ET-FM flowmeter adopts advanced technology, which can be widely used for different fuel dispensers. It has the advantage of high flow, long working life, high accuracy firm structure, easy installation, etc Ecotec provide tatsuno, tokheim, Gilbarco, Wayne flow meter to meter the different demand from different area, with special treatment, it can be used for wide range of fuel, such as gasoline, diesel, kerosene, biofuelGasohol, also can be used for Adblue and Engine oil. Approved by OIML and MID

**ET Flow meter offer various capacity for choice, such as 45LPM, 70LPM, 90LPM and 120LPM.**

Fuel Parts



ET- FM1

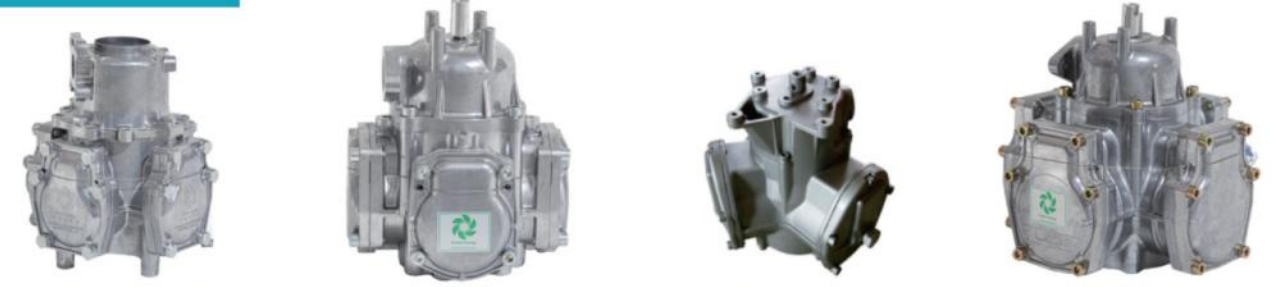
ET- FM2

ET- FM3

ET- FM4

Model Number	ET- FM1	ET- FM2	ET- FM3	ET- FM4
Discharge revolution	0.5L	0.5 L	0.5 L	0.5 L
Flow range	5-75L/min	5-75 L/min	5-55L/min	5-55 L/min
Working pressure	0.12Mpa-0.35Mpa	0.12Mpa-0.35Mpa	0.12Mpa-0.35Mpa	0.12Mpa-0.35Mpa
Accuracy	±0.1%	±0.1%	±0.2%	±0.2%
Repeatability	=0.01%	=0.01%	=0.01%	=0.01%
GW/Dimension	11KG/58*29*32cm	11KG/58*29*32 cm	27KG/30*27*37 cm	10KG/58*29*32 cm

## Other Meter



ET- FM5  
90L/min

ET- FM6  
120L/min

ET- FM7  
160L/min

ET- FM8  
200L/min



# Motor



ET motor for fuel dispenser, is available with different Voltage from 110 to 380, also available with different capacity such as 3/4 HP to 7HP to meet the different range of fuel dispenser. ET motor have CNEX, ATEX and UL certificate, with over heat and over load protection, also have a big voltage tolerance to meet the bad working situation in some area where do not the regular power supply

Fuel Parts



MT-1-1

Voltage	220V
Frequency	50/60HZ
Output	1or 1.5HP
Size	32*24*22cm
G.Weight	18Kgs
QTY	1pcs/ctn



MT-3-1

Voltage	380V
Frequency	50/60HZ
Output	1or 1.5HP
Size	32*24*22cm
G.Weight	12Kgs
QTY	1pcs/ctn



MT-1-2

Voltage	220V
Frequency	50/60HZ
Output	1or 1.5HP
Size	36*25*22cm
G.Weight	18Kgs
QTY	1pcs/ctn



MT-3-2

Voltage	380V
Frequency	50/60HZ
Output	1or 1.5HP
Size	36*25*22cm
G.Weight	18Kgs
QTY	1pcs/ctn



MT-1-3

Voltage	110/220V
Frequency	50/60HZ
Output	1or 1.5HP
Size	36*25*22cm
G.Weight	20Kgs
QTY	1pcs/ctn



MT-3-3

Voltage	380V
Frequency	50/60HZ
Output	3/4or1HP
Size	32*24*22cm
G.Weight	10Kgs
QTY	1pcs/ctn



MT-3-4

Voltage	380V
Frequency	50/60HZ
Output	2Kw
Size	40*55*35cm
G.Weight	28Kgs
QTY	1pcs/ctn



MT-3-5

Voltage	380V
Frequency	50/60HZ
Output	5.5Kw
Size	40*55*35cm
G.Weight	30Kgs
QTY	1pcs/ctn



MT-VR1

Voltage	220V
Frequency	50/60HZ
Output	1/2 HP
Size	30*20*22cm
G.Weight	10Kgs
QTY	1pcs/ctn



MT-VR3

Voltage	380V
Frequency	50/60HZ
Output	1/2 HP
Size	25*20*22cm
G.Weight	8Kgs
QTY	1pcs/ctn

# Solenoid Valve



Solenoid Valve is used to control the fueling with a better accurate, it contain stage of valve, big and small Big valve is to control the flow, small valve is to reduce the flow rate and avoid any over flow. Voltage is available from 12V, 24V, 110V, 220V, 380V, available with CNEX and ATEX certificate

Fuel Parts



MSF-20AA

Type	Flange 3/4"
Volage	220V/110V
Flow Rate	55L/M
Size	46*43*25cm
G.Weight	25Kgs
QTY	15pcs/ctn



MSF-25AA

Type	Flange 3/4"
Volage	220V/110V
Flow Rate	90L/M
Size	68*28*20cm
G.Weight	22Kgs
QTY	10pcs/ctn



MSF-20BA

Type	M Thread 3/4"
Volage	220V/110V
Flow Rate	55L/M
Size	46*43*25cm
G.Weight	25Kgs
QTY	15pcs/ctn



MSF-25BA

Type	M Thread 1"
Volage	220V/110V
Flow Rate	90L/M
Size	68*28*20cm
G.Weight	22Kgs
QTY	10pcs/ctn



MSF-20DA

Type	F Thread 3/4"
Volage	220V/110V
Flow Rate	55L/M
Size	46*43*25cm
G.Weight	25Kgs
QTY	15pcs/ctn



MSF-25DA

Type	F Thread 1"
Volage	220V/110V
Flow Rate	90L/M
Size	68*28*20cm
G.Weight	22Kgs
QTY	10pcs/ctn



MSF-20AL

Type	F Thread 3/4"
Volage	220V/110V
Flow Rate	55L/M
Size	46*43*25cm
G.Weight	25Kgs
QTY	15pcs/ctn



MSF-25AL

Type	F+M 1"
Volage	220V/110V
Flow Rate	90L/M
Size	68*28*20cm
G.Weight	22Kgs
QTY	10pcs/ctn



DSF-20



DSF-25



D-40



D-50/80/100

# Hose and Hose connector



Ecotec Fuel dispenser hose is compatible with multiple fuels: Gasoline, diesel, Kerosene, E10, B20, E55, E85 Available for UI330, En1360, Hg3037, available for low and high temperature application Multiple colors available: Black, Red, Yellow, Blue, Green, Gray, Orange

Fuel Parts



## Construction Details

Tube: NBR  
Reinforcement: Single wire braid  
Cover: CPE  
Hardwall construction with ozone resistant cover  
Low Volume expansion, durability and kink resistance  
conductive  
Working Temperature: -40 to 55 °C

NOMINAL SIZE	L.D. (mm)	O.D (mm)	WORKING PRESSURE (max)		PROOF PRESSURE		BURSTING PRESSURE (max.)		BEND RADIUS (min.)		WEIGHT APPROX
			Psi	Mpa	Psi	Mpa	Psi	Mpa	Inch	mm	
Inch	mm	mm									
3/4	19	30	232	1.6	348	2.4	696	4.8	3.9	100	0.697
7/8	22	31.5	232	1.6	348	2.4	696	4.8	5.1	130	0.770
1	25	37	232	1.6	348	2.4	696	4.8	5.9	150	0.982
1-1/4	32	44	232	1.6	348	2.4	696	4.8	6.9	175	1.145
1-1/2	38	50	232	1.6	348	2.4	696	4.8	8.9	225	1.339

## Oil indicator



OI-1-3/4"  
Inlet: 3/4"  
Outlet: 3/4"  
  
OI-1-1"  
Inlet: 1"  
Outlet: 1"

OI-1



OI-2-3/4"  
Inlet: 3/4"  
Outlet: 3/4"  
  
OI-2-1"  
Inlet: 1"  
Outlet: 1"

OI-2



OI-3-3/4"  
Inlet: 3/4"  
Outlet: 3/4"  
  
OI-3-1"  
Inlet: 1"  
Outlet: 1"

OI-3



OI-4-3/4"  
Inlet: 3/4"  
Outlet: 3/4"  
  
OI-4-1"  
Inlet: 1"  
Outlet: 1"

OI-4

## Breakaway Valve



BV-1-3/4"  
Inlet: 3/4"  
Outlet: 3/4"  
  
BV-1-1"  
Inlet: 1"  
Outlet: 1"

BV-1



BV-2-3/4"  
Inlet: 3/4"  
Outlet: 3/4"  
  
BV-2-1"  
Inlet: 1"  
Outlet: 1"

BV-2



BV-3-3/4"  
Inlet: 3/4"  
Outlet: 3/4"  
  
BV-3-1"  
Inlet: 1"  
Outlet: 1"

BV-3



BV-4-3/4"  
Inlet: 3/4"  
Outlet: 3/4"  
  
BV-4-1"  
Inlet: 1"  
Outlet: 1"

BV-4

## Nozzle Boot



NB-1



NB-2



NB-3



NB-4



NB-5

New Design

# Fuel Nozzle



Ecotec Fuel Nozzle designed according to different fuel dispenser, different application, suitable for Diesel, Gasoline, Kerosene and Gasohol, with advantage of automatic shut-off, pressure shut-off and heavy duty at Pressure of 1.8Mpa, color of nozzle cover is available as Green / Red / Blue / Yellow / Black / Silver

Fuel Parts



FN-1A

Inlet	Npt/Bsp.3/4"
Outlet	13(15)/16"
Flow Rate	55L/M
Size	42*34*37cm
G.Weight	13 Kgs
QTY	10pcs/ctn



FN-1b

Inlet	Npt/Bsp.1"
Outlet	17/16"
Flow Rate	90L/M
Size	42*34*37cm
G.Weight	16 Kgs
QTY	10pcs/ctn



FN-2A

Inlet	Npt/Bsp.3/4"
Outlet	13(15)/16"
Flow Rate	55L/M
Size	42*34*40cm
G.Weight	16 Kgs
QTY	10pcs/ctn



FN-2B

Inlet	Npt/Bsp.1"
Outlet	17/16"
Flow Rate	90L/M
Size	42*34*40cm
G.Weight	18Kgs
QTY	10pcs/ctn



FN-3A

Inlet	Npt/Bsp.3/4"
Outlet	13(15)/16"
Flow Rate	55L/M
Size	42*34*37cm
G.Weight	13 Kgs
QTY	10pcs/ctn



FN-3B

Inlet	Npt/Bsp.1"
Outlet	17/16"
Flow Rate	90L/M
Size	42*34*40cm
G.Weight	16 Kgs
QTY	10pcs/ctn



FN-4A

Inlet	Npt/Bsp.3/4"
Outlet	13(15)/16"
Flow Rate	55L/M
Size	62*42*38cm
G.Weight	28 Kgs
QTY	10pcs/ctn



FN-4B

Inlet	Npt/Bsp.1"
Outlet	17/16"
Flow Rate	90L/M
Size	62*42*38cm
G.Weight	32 Kgs
QTY	20pcs/ctn



FN-5A

Inlet	Npt/Bsp.3/4"
Outlet	13(15)/16"
Flow Rate	55L/M
Size	62*42*38cm
G.Weight	28 Kgs
QTY	20pcs/ctn



FN-5B

Inlet	Npt/Bsp.1"
Outlet	17/16"
Flow Rate	90L/M
Size	62*42*38cm
G.Weight	32 Kgs
QTY	20pcs/ctn

# Coupling and Swivel



Ecotec hose swivel and coupling is designed to used for diesel, gasoline, Kerosene, biofuel and Gasohol  
With different type of shape, size is available from 3/4" to 2", both NPT and BSTP is available, material available with Zinc alloy, copper, aluminum.

Fuel Parts



SW1-3/4"



SW1-1"



SW2-3/4"



SW3-3/4"



SW3-1"



SW4-3/4"



SW4-1"



SW5-3/4"



SW5-1"



SW 6

Inlet 3/4"  
Outlet 1"



SW 7

Inlet 1"  
Outlet 3/4"



SW 8

Inlet 3/4"  
Outlet 1"



SW 9

Inlet 1"  
Outlet 3/4"



HC1-3/4"



HC1-1"



HC2-3/4"



HC2-1"



HC3-3/4"



HC3-1"



HC4-3/4"



HC4-1"

# Spare Parts



Ecotec fuel dispenser parts including EX junction box, Filter for submersible dispenser, valve for pipe line and flexible pipe with flange and check valve.

## EX Junction box



JB-3



JB-5-1



JB-5-2



JB-8

Fuel Parts

## Filter



FT-1



FT-2

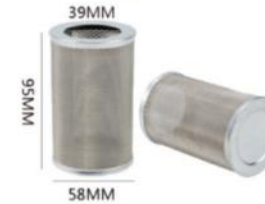


FT-3



FT-4  
Reusable

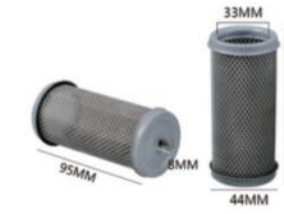
## Cartridge



FTC-1



FTC-2



FTC-3



FTC-4

## Cut-off Valve, Check valve and bottom Valve



EV-1

Female Thread  
Size: 1.5"



EV-2

Female in  
Male Out  
Size: 1.5"



AV-1

Size: 1.5"  
2"



BV

Size: 1.5"  
2"

## Flexible Pipe, Flange and Check Valve



TF-1



CV-1



FP-1

Flange  
Length: 15CM  
Size: 1.5"



FP-2

Flange in  
Male Thread out  
Length: 15CM  
Size: 1.5"

# Measuring Can



Ecotec Measuring Can is built to NIST Handbook 105-4 Standards, OIML R-120 and API Manual of Petroleum Measurement Chapter 4. Capacity is from 2 L to 5000 L, three grade, grade one for lab testing, grade two for Metrology department, grade 3 for station owner, material available with Carbon steel and Stainless steel.

Fuel Parts



Imodel	5L BL-3-G
Capacity	5L
Grade	3
Accuracy	2.5*10-4
Material	SS304



Imodel	10L BL-3-G
Capacity	10L
Grade	3
Accuracy	2.5*10-4
Material	SS304



Imodel	20L BL-3-G
Capacity	20L
Grade	3
Accuracy	2.5*10-4
Material	SS304



Imodel	20L BL-3-G
Capacity	20L
Grade	3
Accuracy	2.5*10-4
Material	Ss304



Imodel	50LBL-3-G
Capacity	50L
Grade	3
Accuracy	2.5*10-4
Material	SS304



Imodel	100LBL-3-G
Capacity	100L
Grade	3
Accuracy	2.5*10-4
Material	SS304



Imodel	200L BL-2-G
Capacity	200L
Grade	3
Accuracy	2.5*10-4
Material	SS304



Imodel	500L BL-2-G
Capacity	500L
Grade	2
Accuracy	2.5*10-4
Material	SS304



Imodel	2000BL-2-G
Capacity	2000L
Grade	2
Accuracy	2.5*10-4
Material	SS304



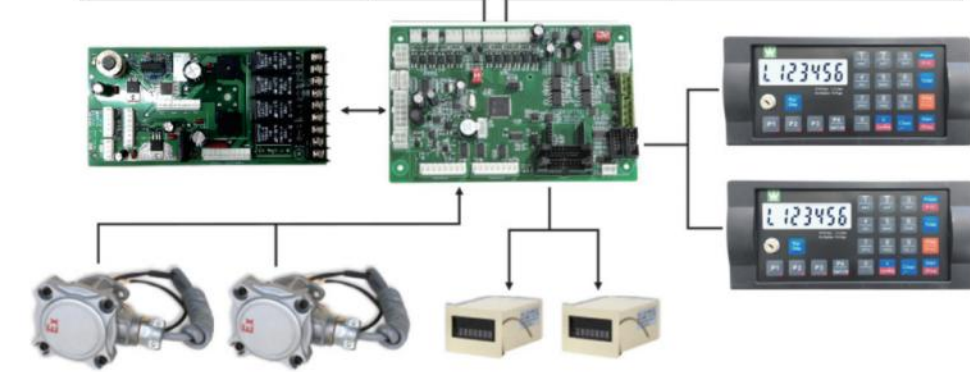
Imodel	5000BL-2-G
Capacity	5000L
Grade	2
Accuracy	2.5*10-4
Material	SS304

# Electronic Controller WA



WA Series Controller is specially designed for single and double nozzle fuel dispenser as well as LPG Dispenser and CNG dispenser with its stability easy-operation and automation-friendly, it is widely accepted in the market like Asia, Middle east and Africa. With both Tatsuno and Gilbarco Protocol, it can work with DOMS, ITLS, TPS directly without any integration. With option of both 886 digits and 664 digits, it is suitable for any currency in the world.

Fuel Parts

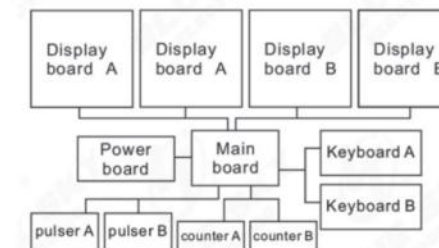


Pump-nozzle-display	Mainboard	Powerboard	displayboard	Keyboard	pulser	counter
1-1-2	1	1	2	1	1	1
1-2-2	1	1	2	2	2	2
2-2-4	1	1	4	2	2	2



### Advantage

- Easy operation
- Less maintenance
- Stable and accurate
- Wide range of power supply
- Varies of keyboard and display board to meet different market
- Many special function for different area use
- Self diagnostics with error code



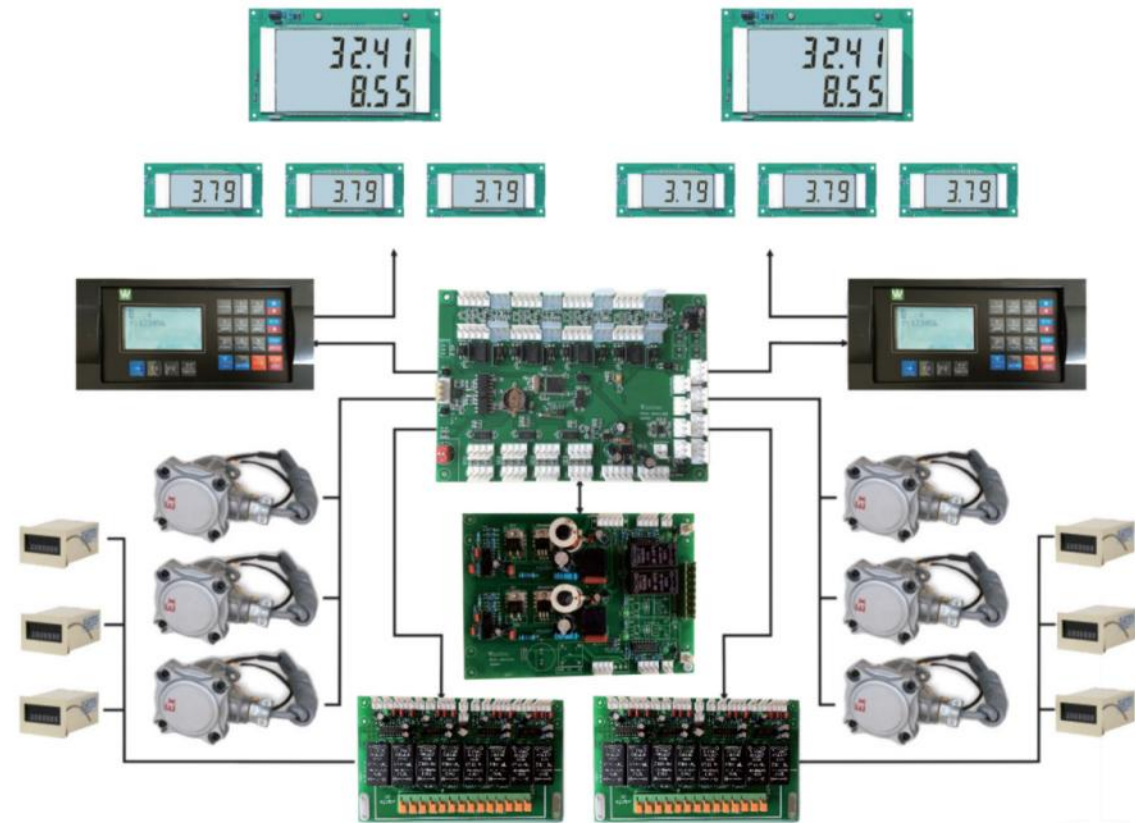
- New CPU: STM 32 with 512Kb Ram, Stable more than fast
- Self-service: IC / ID / APP money pocket available
- Fuelplus: APP to monitor / control dispenser, anywhere, anytime
- POS: Tatsuno / Gilbarco protocol to work with most POS
- Various Usage: Available for LPG /CNG /LNG/Adblue available
- Compatibility: Both suction and submersible Tatsuno / Tokheim / Bennett Pump available
- Option: TV, LED, Printer, Wireless, Voice Teller...

# Electronic Controller WB



WB Series Controller is developed for multi-nozzle fuel dispenser, one controller can control 10 Nozzles With English operation menu in Keyboard, it is very easy to do any set or operation, WB is very popular in Middle East, South American, European countries, also it is widely used on the fleet fuel dispenser in big Oil companies , with both Gilbarco and Tatsuno protocol, with option of IC Card, ID card and Voice Teller

Fuel Parts



### Configuration(Product-Nozzle--Display)

Model	Main board	Power board	Display board	Key board	Drive board	Pulser	Counter
8-8-2	1	1	2	2	2	8	8
4-8-2	1	1	2	2	2	8	8
6-6-2	1	1	2	2	1	6	6
3-6-2	1	1	2	2	1	6	6
4-4-2	1	1	2	2	1	4	4
2-4-2	1	1	2	2	1	4	4
2-2-2	1	1	2	2	1	2	2
1-2-2	1	1	2	2	1	2	2
8-8-4	1	1	4	4	2	8	8
4-8-4	1	1	4	4	1	8	8
6-6-4	1	1	4	4	1	6	6
3-6-4	1	1	4	4	1	6	6
2-4-4	1	1	4	4	1	4	4

### Advantage

- Easy operation
- Less maintenance
- Stable and accurate
- Wide range of power supply
- Varies of keyboard and display board to meet different market
- Many special function for different area use
- Multi Level Password control
- Multi Nozzle design, 1 control 10 Nozzle Max
- Self-service: IC / ID / APP money pocket available
- POS: Tatsuno / Gilbarco protocol ready
- English Menu easy to operation
- Compatibility: Both suction and submersible
- Tatsuno / Tokheim / Bennett Pump available

# Electronic Parts



Ecotec controller provide varies of Display board, Keyboard and Pulsers for option to achieve the different demand from different areas and different function, customer can choose to 886 digits or 664 digits display can choose different material of keyboard, different type of pulser to work on different flow meter.

Fuel Parts

### Film Keyboard



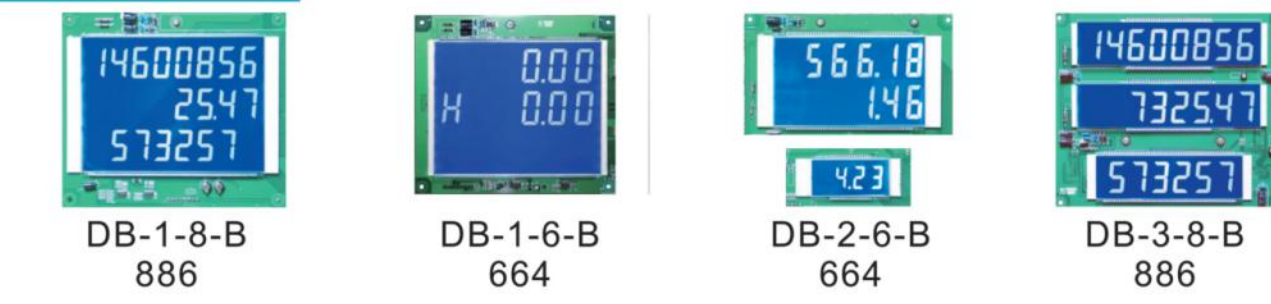
### Metal Keyboard



### Display Board White



### Display Board Blue



### Pulser

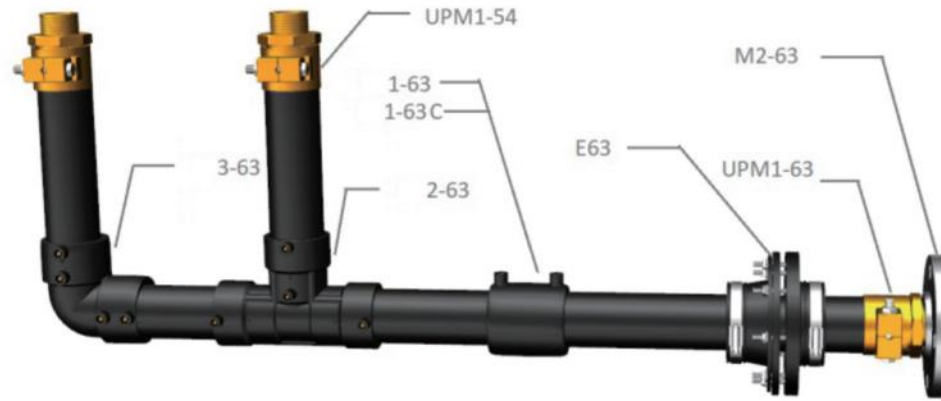


# Underground Petrol Pipe

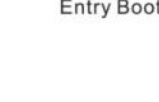
the most advanced and installer friendly

Underground HDPE gasoline petrol station pipe  
 Underground flexible Dual and Secondary Containment Piping Systems is the most advanced and installer friendly double-wall piping system available for use on filling stations. The product range covers all piping needs that may arise on a filling station: Remote fill, pressure and suction, ventilation, vapor recovery or conduits. With zero permeation of hydrocarbons piping keep fuel where it is supposed to be.

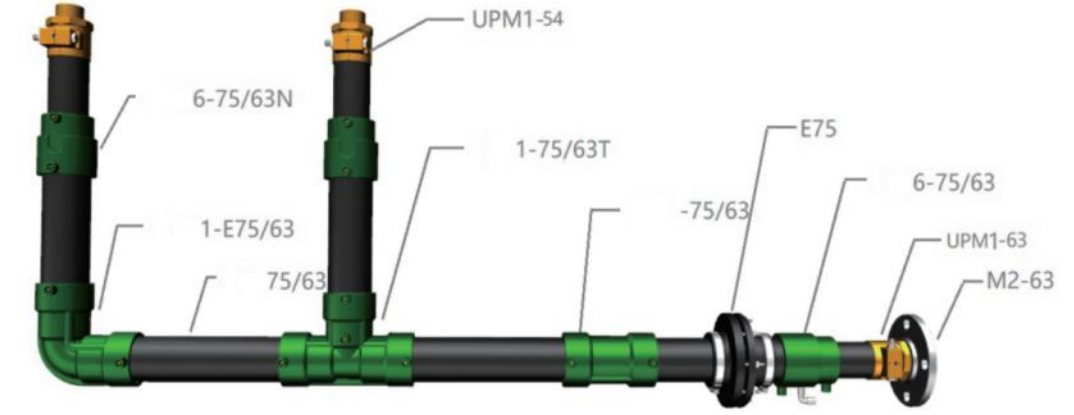
## Underground HDPE gasoline petrol station pipe- Single Layer



Model	Description
ET 54EC6 1½"	primary pipe O.D.54mm 5.8m/pc straight
ET 54EC100 1½"	primary pipe O.D.54mm 5.8m/pc straight
ET 63EC6 2"	primary pipe O.D.54mm 5.8m/pc straight
ET 63EC100 2"	primary pipe O.D.54mm 85m/pc straight
ET 90EC6 3"	primary pipe O.D.54mm 5.8m/pc straight
ET 90EC50 3"	primary pipe O.D.54mm 50m/pc straight
ET 110EC6 4"	primary pipe O.D.54mm 5.8m/pc straight
ET 1-54	1½" primary welding socket;
ET 1-63	2" primary welding socket;
ET 1-90	3" primary welding socket;
ET 1-110	4" primary welding socket;
ET 2-54	1½" primary plain tee fitting
ET 2-63	2" primary plain tee fitting
ET 2-90	3" primary plain tee fitting
ET 2110	4" primary plain tee fitting
ET 3-54	1½" primary 90° plain elbow fitting
ET 3-63	2" primary 90° plain elbow fitting
ET 3-90	3" primary 90° plain elbow fitting
ET 3-110	4" primary 90° plain elbow fitting
ET 4-54	1½" primary 45° plain elbow fitting
ET 4-63	2" primary 45° plain elbow fitting
ET 4-90	3" primary 45° plain elbow fitting
ET 4-110	4" primary 45° plain elbow fitting
ET 5-54	1½" static Conductive Plug-in Unit for connection
ET 5-63	2" static Conductive Plug-in Unit for connection
ET 5-90	3" static Conductive Plug-in Unit for connection
ET 5-110	4" static Conductive Plug-in Unit for connection
ET M1-54	1½" male copper terminal coupling, Suitable for O.D. 54 mm
ET M1-63	2" male copper terminal coupling, Suitable for O.D. 63 mm
ET M1-90	3" male copper terminal coupling, Suitable for O.D. 90 mm
ET M1-110	4" male copper terminal coupling, Suitable for O.D. 110 mm
ET M2-54	parting flange with thread fitting DN40 , O.D. 54 mm
ET M2-63	parting flange with thread fitting DN50 , O.D. 63 mm
ET M2-90	parting flange with thread fitting DN80 , O.D. 90 mm
ET M2-110	parting flange with thread fitting DN100 , O.D. 110 mm
ET 8-90/63	reducer, O.D. 110mm to 63mm
ET 8-110/90	reducer, O.D. 110mm to 90mm
ET 8-110/63	reducer, O.D. 90mm to 63mm
ET 63/54	rubber Washer
ET 110/90	rubber Washer
FY9-75/54	entry boot
FY9-125/90	entry boot



## Secondary Contained pipeworks system-Double Layer



Model	Description
ET 65/54EC6	1½" double wall pipe, 5.8m/pc straight
ET 65/54EC50	1½" double wall pipe, 50m/pc straight
ET 75/63EC6	2" double wall pipe, 5.8m/pc straight
ET 75/63EC50	2" double wall pipe, 50m/pc straight
ET 125/110SCEC6	4" double wall pipe, 5.8m/pc straight
ET 1-65/54SC	1½" double wall welding socket
ET 1-75/63SC	2" double wall welding socket
ET 1-125/110SC	4" double wall welding socket
ET 2W-75/63	2" double wall welding tee fitting
ET 2-65/54	1½" double wall plain tee fitting
ET 2-75/63	2" double wall plain tee fitting
ET 2-125/110	4" double wall plain tee fitting
ET 6-75/63	2" double wall 90° welding elbow fitting
ET 7-75/63	2" double wall 45° welding elbow fitting
ET 3-65/54	1½" double wall 90° plain elbow fitting
ET 3-75/63	2" double wall 90° plain elbow fitting
ET 3-125/110	4" double wall 90° plain elbow fitting
ET 4-65/54	1½" double wall 45° plain elbow fitting
ET 4-75/63	2" double wall 45° plain elbow fitting
ET 4-125/110	4" double wall 45° plain elbow fitting
ET 5-65/54	1½" double wall Terminal Welding Socket, with rotating testport
ET 5-75/63	2" double wall Terminal Welding Socket, with rotating test port
ET 5-125/110	4" double wall Terminal Welding Socket, with rotating testport
ET dn 50	flexible connection to prevent pipeline from displacement 2"
ET dn90	flexible connection to prevent pipeline from displacement 3"
ET dn100	flexible connection to prevent pipeline from displacement 4"



UPP

UPP

# Manhole and sump

Tank Manhole



SPILL TANK



Manhole



Manhole and sump

## SINGLE WALL FIBERGLASS TANK SUMPS

Our tank sumps are a two-piece design eliminating the need to work in a confined space during installation. A polyhedral structure with a surface number of 16 faces and an effective operating space of 1350 mm\*600mm, sufficient space to facilitate equipment installation and personnel access to the tank

Dispenser Sump



## SINGLE WALL FIBERGLASS DISPENSER SUMPS

The fiberglass dispenser sump is designed specifically for use with all types of regular dispensers (2 nozzle except) The dispenser sump comes completely pre-assembled from the factory including the dispenser mounting frame and the stabilizer bar kit mounting tracks. The stabilizer bar kit mounts into the track and is adjustable on all planes to ensure proper alignment of shear valves and pipework.

### Product Details

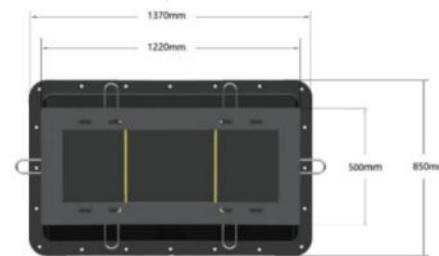
- Durable three-piece design comes pre-assembled from the factory, allowing quick and easy installation
- Available in single wall only
- Working pressure :-40°C~+50°C
- 30-years warranty

Model	Description
FS-FB1	fuel dispenser sump



### Specifications

- FRP material, 8mm thickness



# Pump and meter

## Tech. Specification

Certificates: ATEX, Exd IIB T6 Gb  
 Temperature Classification: T6  
 Termical Protector: Available  
 Termical Protector Temperature: 85 °C  
 Ex-Glent Entrance: Available  
 Leak Detector Piston type  
 Leakage Observing Sensibility 12 Litre / Hour  
 Sifon Valve / Check valve Available  
 Junction Box Double Ex Junction Box with Wirebridge  
 System Work Pressure 2 – 5 Bar  
 Motor External Cooling Available  
 Motor Protection Case Stainless Steelc

Model	Power(KW)	Voltage (V)	Flow Rate (L/m)	Pressure (KPa)	Working Nozzles
SBP-75	0.75	220/380	228	207	4
SBP-150	1.5	220/380	304	207	6
SBP-200	2	220/380	380	276	8
SBP-300	3	380	600	276	12
SBP-500	5	380	1000	276	16
SBP-200B	2	380	0-380	0-276	8
SBP-300B	3	380	0-600	0-276	12
SBP-500B	5	380	0-1000	0-276	16



Pump and meter

Vane Pump



Size: 2 / 2.5 / 3 / 4 "

LC Flow Meter



Size: 1.5 / 2 / 3 / 4 / 6 "

Discharging Meter T-80



Size: 3"

Discharging Skid DS-50



Items	Index
Pump	2 "
Meter	2"
Hose	1.5"
Hose reel	1.5"
Nozzle	1.5"
Power	220 / 380V
Control box	EX Proof
Valve	220V

Model	Flow Rate
DS-50	200L/M
DS-65	300L/M
DS-80	500L/M
DS-100	800L/M

# LPG DISPENSER

For LPG vehicles and LPG cooking cylinder

**LPG Dispenser C series** with flow rate from 5LPM to 60LPM serve for dispensing of LPG to both LPG vehicles and LPG cylinder

**Model C** are progressive single or double side LPG dispenser with 1 to 2 hose(each side) for dispensing 2 Nozzles at the same time. The LPG dispenser are equipped by the highest-quality air separator and 4-Piston Flow meter and a reliable electronic controller WA, WB and WF Series

This model is also available for suction type, inside can install the pump to make the LPG dispenser self-priming

- Available with IC / ID CARD SYSTEM
- Optional function: Media player / LED rolling display
- Ticket printer / Voice Teller / Barcode Scanner
- Fuelplus Management system working with GRPS / 4G / WIFI / RJ 45 Wire and Lora to achieve remote control, error report, record enquiry on cell phone, computer, Smart Scree and handle POS

Model	Pump	Nozzle (Meter)	Display
LPG-C112	0	1	2
LPG-C112S	1	1	2
LPG-C124	0	2	4
LPG-C124S	1	2	4

### Part View



### Tech Specification

- Ambient temperature: -25°C to +55°C
- Standard speed (40 l/min)
- LPG one and two hoses
- Gas separator equipped with a large filter
- Cold climate: -40°C to +55°C
- Temperature of fluid: -25°C to +25°C
- Relative humidity: 5% to 95%
- Accuracy: ±0.3%
- Digits of display: 8-8-6 (Sale-Liter-Price)
- Automatic temperature compensation
- Electronic / Mechanical calibration
- Preset functions via push buttons
- Wide range of LPG nozzle options



LPG-C124

1Product-2Nozzle-4Display  
Dimension:950\*460\*2200mm

### Model List



LPG-M111



LPG-M111



LPG-D112



LPG-D124



LPG-F122



LPG-C124



LPG-M124



LPG-G124



LPG-FB124



# LPG SCALE

For LPG cooking cylinder

**LPG Filling Scale** designed for filling the cooking cylinder with flow rate from 1 Kgs / min to 30 Kgs /min, cylinder range is from 2 kgs to 200 kgs, with accurate of 0.3%.

Model LPG-F111 are progressive single or double side with 1 to 2 hose for filling 2 LPG cylinder at same time, the filling scale are equipped with by the highest-accurate balancer, gas control valve and a reliable electronic controller WA and GT Series with option for WIFI and fuelplusManagement system to have all data online

A simple and attractive design with durable material in addition to have a pump start control and E-stop and inlet filter to ensure the filling scale lasts longer and offers certain benefit to its users

- Support a big range weight of cylinder
- Support different type of cylinder valve by different nozzle
- Easy operation, with same function list as LPG Dispenser
- Available with IC / ID CARD SYSTEM
- Ticket printer / Voice Teller / Barcode Scanner
- Fuelplus Management system working with GRPS / 4G / WIFI / RJ 45 Wire and Lora to achieve remote control, error report, record enquiry on cell phone, computer, Smart Scree and handle POS



LPG

Model	Pump	Nozzle (Meter)	Display
LPG-F111	0	1	1
LPG-F111S	1	1	1
LPG-F122	0	2	2
LPG-F222S	2	2	2

### Part View



### Tech Specification

- Accuracy: III
- Weighing range: 2kg~120kg
- Valve serving life: No less than 2 years
- Division value: 100g
- Operating pressure: 0~1.6Mpa
- Suitable gas filled: LPG and other liquefied gases with explosion protection
- Requirements no higher than EXib II CT
- Automatic distinguish the kind of LPG cylinder
- Anti Cheating



### LPG cylinder



3kgs AF



3kgs Ph



5Kgs



7Kgs -new



9Kgs -SA



10Kgs -new



11kgs Ph



12.5Kgs S.America



12.5Kgs NG



15Kgs cambodia

### Cylinder Valve



CV-1



CV-2



CV-3



CV-4



CV-5

### LPG Regulator



RGV-1



RGV-2



RGV-3



RGV-4

### Filling Nozzle



LFN-1



LFN-2



LFN-3



LFN-4

### Other Parts



LPG-MSF20



PG-1



LH-1



YFT-1

LPG

# LPG Pumps

# LPG PARTS

## LPG Pump



220V Pump

Model	LPG-D30
Speed	690RPM
Flow rate	43L/min
Power	220V 2.2KW
Inlet	1"NPT
Outlet	1"NPT
pressure difference	5bar
Temp	-32°C~65°C



LPG Vane Pump

Model	LYB-2000
Speed	500 RPM
Flow rate	300LPM
Power	380V,5.5KW
Inlet	NPT2"
Outlet	NPT2"
pressure difference	6.9bar
Temp	-32°C~65°C



LPG Turbine Pump

Model	LWB-150
Speed	2880 RPM
Flow rate	120 L/Min
Power	380V 5.5KW
Inlet	1.5"
Outlet	1"
pressure difference	17.2bar
Temp	-32°C~65°C



LPG Sliding Pump

Model	LPG-40
Speed	1400 RPM
Flow rate	140LPM
Power	380V,1.5KW
Inlet	NPT1.5"
Outlet	NPT1.5"
pressure difference	6bar
Temp	-32°C~65°C



LPG Multistage pump

Model	DB-65	DB-85
Speed	1450rpm	1450rpm
Flow Rate	90LPM	140LPM
Pressure	14 Bar	16Bar
Power	380V 4KW	380 5.5KW



Cylinder transfer Pump

Model	YQB-5	YQB-10
Speed	3	3
Flow Rate	40Kgs/m	80Kgs/m
Pressure	16 Bar	16 Bar
Power	220V 2.2KW	380V 4KW



LPG rotary pump

### Technical Data For LPG Pump

Model	Rev (rpm)	Capacity (m <sup>3</sup> /h)	Diff. Press. (mpa)	Working Press. (mpa)	Motor Power (kw)	Inlet (inch)	Outlet (inch)
YQB2-5	600	2	0.5	1.6	1.5	1	1
YQB5-5	780	5	0.5	1.6	2.2	1.5	1.5
YQB10-5	600	10	0.5	1.6	5.5(4)	2	2
YQB15-5	780	15	0.5	1.6	5.5(4)	2	2
YQB25-5	600	25	0.5	1.6	11	3	3
YQB35-5	780	35	0.5	1.6	11	3	3
YQB50-5	600	50	0.5	1.6	15	4	4
YQB60-5	780	60	0.5	1.6	15	4	4
YQB80-5	780	80	0.5	1.6	18.5	4	4

## LPG Compressor



Model	Power (KW)	Voltage (V)	Capacity (CBM/M)	Inlet P. (Mpa)	Outlet P. (Mpa)	Weight (KGS)	Dimension (mm)
ZW-0.4/10-16	5.5	380	0.4	1	1.6	380	1380*880*1220
ZW-0.6/10-16	7.5	380	0.6	1	1.6	380	1380*880*1220
ZW-0.95/10-16	11	380	0.95	1	1.6	430	1380*880*1220
ZW-1.1/10-16	16	380	1.1	1	1.6	590	1380*880*1220
ZW-1.5/10-16	18.5	380	1.5	1	1.6	620	1380*880*1220
ZW-1.6/10-16	22	380	1.6	1	1.6	630	1380*880*1220
ZW-2.0/10-16	30	380	2.0	1	1.6	880	1680*980*1220

## LPG Meter



Max. Working Pressure:	1.8MPa
Flow Rate:	5-50L
revolution:	0.5L/r
Accuracy:	±0.25%
Repeatable Tolerance:	≤0.1%
Package:	1pc/carton
Gross Weight:	33kg
Dimension:	360*290*360mm

## LPG Seperator

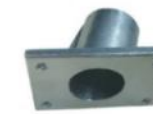


Max. Working Pressure:	2.5MPa
Strainer:	0.08mm
Package:	1pc/Wooden Case
Net Weight:	17.5kg
Gross Weight:	23kg
Dimension:	470*300*310mm

## Other LPG Parts



LPG Nozzle



Nozzle Boot



Breakaway Valve



LPG Hose



Solenoid Valve



Differential Valve



Safety Valve AQ-1



LPG Manometer



Check Valve



Safety Valve AQF-80



Emergency Cut-off Valve



Pipe safety Valve



Y Strainer



Global Valve



Coupling Valve 2"



Coupling Valve 1"

# LPG Tank & Trailer

LPG Storage and transportation



LPG Tank 2.5T



LPG Tank 5 T



LPG Trailer



LPG STATION 2 X 20 Ton

Dimension(L*W*H):	3.8 x 2 x 2.3mm
Capacity:	5 CBM / 2.5 Ton
Filling ratio	0.9
Weight:	3500
Design Standard:	GB150/ASME
Working Temperature(°C) :	-19 - 50 °C
Working Pressure:	1.63MPa
Design Pressure:	1.77MPa
LPG Tank Materials:	Q345R carbon steel
Processing	heat treatment/X-ray detection
Design Service Life	20 Years

Dimension(L*W*H):	9.5 x 2 x 2.3mm
Capacity:	10 CBM / 5 Ton
Filling ratio	0.9
Weight:	8700
Design Standard:	GB150/ASME
Working Temperature(°C) :	-19 - 50 °C
Working Pressure:	1.63MPa
Design Pressure:	1.77MPa
LPG Tank Materials:	Q345R carbon steel
Processing	heat treatment/X-ray detection
Design Service Life	20 Years

Model	HCH9406GYQC
Capacity	59.4m3
Dimension	13000*2500*4000*11mm
Tare / Load Weight	15050KG / 24950KG
Products	LPG , Propane
Design temperature	to 50°C
Design pressure	1.61MPa
Materials	Tanker body : Q370R 11mm
Compartments / Manhole	3 Dn450
Axles	3*FUWA Brand 13 Ton Widen 16Ton brake pads

LPG Tank	T25 X 2
Capacity	100 m3
Dimension	11800*2200*2800* 2 Unit
LPG Pump	YQB 25-5 * 2
LPG Vapouizer	20 CBM / H * 2
Design temperature	to 50°C
Design pressure	1.61MPa
Materials	Tanker body : Q345R 14mm
Valve	Safety / Ball / Global Valve
Automation	Fuelplus System

# LPG Skid

Complete turn-key solution for lpg filling

It contains LPG tank, LPG dispenser/ LPG filling scale, LPG pump, Control box, Leakage detection system, water cooling system, level meter and valves as complete set on the skid. Besides, it can add Mass Flow Meter for measuring unloading data, LPG compressor for speeding up unloading, Sun Shield for protection and connect with our management system to monitor the live data of tank's stock, unloading quantity and sales quantity. The data also can be seen through our APP in the further. This product is available for filling the LPG vehicles and LPG cooking/camping cylinder.

## LPG SKID LPG-T5-D2 WITH LPG DISPENSER

LPG Tank	5T * 1
LPG Dispenser	D122 Double nozzle *1
LPG Pump	YQB15-5 Filling and loading
LPG Level Meter	Dn25 *1.6m
EX control Box	Control Pump, dispenser * 1
Leakage detection	1 Console with 2 detector
Function	For LPG vehicle and cylinder
Automation	Fuelplus System

## LPG SKID LPG-T5-F2 WITH LPG Filling Scale

LPG Tank	5T * 1
LPG Filling Scale	F122 Double Nozzle *1
LPG Pump	YQB15-5 Filling and loading
LPG Level Meter	Dn25 *1.6m
EX control Box	Control Pump, dispenser * 1
Leakage detection	1 Console with 2 detector
Function	For LPG Cooking cylinder
Automation	Fuelplus System

## LPG SKID LPG-T20-D2 WITH LPG Dispenser

LPG Tank	20T * 1
LPG Dispenser	D122 Double nozzle *1
LPG Pump	YQB25-5 Filling and loading
LPG Level Meter	Dn25 *2.2m
EX control Box	Control Pump, dispenser * 1
Leakage detection	1 Console with 2 detector
Function	For LPG Vehicle and Cylinder
Automation	Fuelplus System

## LPG SKID LPG-T20-F2 WITH LPG Filling Scale

LPG Tank	20T * 1
LPG Filling Scale	F122 Double nozzle *1
LPG Pump	YQB25-5 Filling and loading
LPG Level Meter	Dn25 *2.2m
EX control Box	Control Pump, dispenser * 1
Leakage detection	1 Console with 2 detector
Function	For LPG Vehicle and Cylinder
Automation	Fuelplus System



# CNG Dispenser

For NGV vehicles

The CNG dispensers serve for dispensing of compressed natural gas (CNG) on filling stations for road vehicles. Ecotec CNG dispensers are one-sided or double-sided with one to four hoses. The CNG dispensers are equipped by the high-quality pressure system, Coriolis mass flow meter and by the reliable electronic calculator WA. The CNG dispensers are operated both in the manual mode (i.e. off-line), and in the automatic mode, where the fuel dispenser is linked with the Fuelplus system and the data concerning volume, sum and price are transmitted to Cloud server

## Features

- Accurate Coriolis mass flow meters
- Reliable electronic calculator TBELTM
- LCD displays (digits-amount/quantity/price = 7/6.5/5)
- Electronically controlled LED backlight
- Modern compact design
- Electronic totalizers
- Electromechanical totalizer for every dispensing nozzle
- Infra-red remote controller for dispenser setup
- Modern design
- Electromagnetic valves for sequential control of pressure sections
- 4-buttons keypad for amount/volume preselection
- Any model colour - on customers request
- Temperature compensation of the filling to max. quantity at 20,0 MPa (200 bar) and 15°C
- Intelligent switching of the pressure sections
- Signal beacons + Collective Error signal



## Part View



Model	Press.Line	Nozzle (Meter)	Display
CNG-F112	1	1	2
CNG-F312	3	1	2
CNG-F124	1	2	4
CNG-F324	3	2	4

## Other Models



## Tech.Specification

Filling performance:	standard, till 30 kg/min increased, till 70 kg/min
Accuracy:	±1.5% (at min. 2 kg)
Max.working pressure:	30,0.MPa (300 bar)
Test pressure:	43,0 MPa (430 bar)
power supply:	230V +10% -15%, 50Hz
Power of switching	+24VDC
Ambient temperature:	standard -25°C ~ +55°C special -40°C ~ +70°C
Gas temperature:	standard -25°C ~ +55°C special -40°C ~ +70°C

# Customers

A Part of customer stations



Ecotec Cambodia



Ecotec Yemen



Ecotec Ethiopia



Ecotec Lebanon



Ecotec Saudi



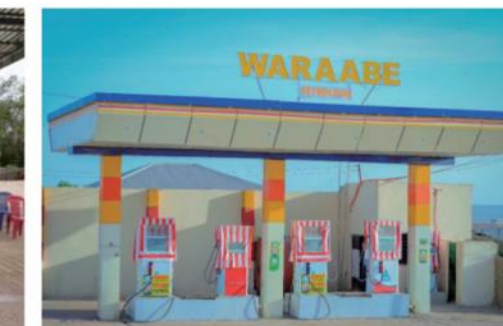
Ecotec Tanzania



Ecotec Bangladesh



Ecotec Myanmar



Ecotec Somali



Ecotec Egypt



Ecotec Uzbekistan



Ecotec Philippine